

Progress and opportunities in advancing near-term forecasting of freshwater quality

Mary E. Lofton¹  | Dexter W. Howard¹  | R. Quinn Thomas^{1,2}  | Cayelan C. Carey¹ 

¹Department of Biological Sciences, Virginia Tech, Blacksburg, Virginia, USA

²Department of Forest Resources and Environmental Conservation, Virginia Tech, Blacksburg, Virginia, USA

Correspondence

Cayelan C. Carey, Department of Biological Sciences, Virginia Tech, Blacksburg, VA, USA.
Email: cayelan@vt.edu

Funding information

National Science Foundation, Grant/Award Number: DBI-1933016, DEB-1753639, DEB-1926050 and DEB-1926388; Virginia Tech

Abstract

Near-term freshwater forecasts, defined as sub-daily to decadal future predictions of a freshwater variable with quantified uncertainty, are urgently needed to improve water quality management as freshwater ecosystems exhibit greater variability due to global change. Shifting baselines in freshwater ecosystems due to land use and climate change prevent managers from relying on historical averages for predicting future conditions, necessitating near-term forecasts to mitigate freshwater risks to human health and safety (e.g., flash floods, harmful algal blooms) and ecosystem services (e.g., water-related recreation and tourism). To assess the current state of freshwater forecasting and identify opportunities for future progress, we synthesized freshwater forecasting papers published in the past 5 years. We found that freshwater forecasting is currently dominated by near-term forecasts of water *quantity* and that near-term water *quality* forecasts are fewer in number and in the early stages of development (i.e., non-operational) despite their potential as important preemptive decision support tools. We contend that more freshwater quality forecasts are critically needed and that near-term water quality forecasting is poised to make substantial advances based on examples of recent progress in forecasting methodology, workflows, and end-user engagement. For example, current water quality forecasting systems can predict water temperature, dissolved oxygen, and algal bloom/toxin events 5 days ahead with reasonable accuracy. Continued progress in freshwater quality forecasting will be greatly accelerated by adapting tools and approaches from freshwater quantity forecasting (e.g., machine learning modeling methods). In addition, future development of effective operational freshwater quality forecasts will require substantive engagement of end users throughout the forecast process, funding, and training opportunities. Looking ahead, near-term forecasting provides a hopeful future for freshwater management in the face of increased variability and risk due to global change, and we encourage the freshwater scientific community to incorporate forecasting approaches in water quality research and management.

KEYWORDS

aquatic ecosystem modeling, data assimilation, ecological forecasting, freshwater management, hindcast, hydrological forecasting, near-term iterative forecasting cycle, uncertainty, water quality, water quantity

This is an open access article under the terms of the [Creative Commons Attribution-NonCommercial-NoDerivs](https://creativecommons.org/licenses/by-nc-nd/4.0/) License, which permits use and distribution in any medium, provided the original work is properly cited, the use is non-commercial and no modifications or adaptations are made.

© 2023 The Authors. *Global Change Biology* published by John Wiley & Sons Ltd.

1 | INTRODUCTION

Ecological forecasts, defined here as future predictions of physical, chemical, or biological variables with quantified uncertainty (Dietze, 2017), are increasingly being developed to understand and predict the future of ecosystems (Lewis et al., 2022). Here, we focus on near-term forecasts, or forecasts of variables at sub-daily to decadal scales, the accuracy of which can be assessed with observational data on management-relevant time scales (Dietze et al., 2018). Near-term forecasts of future ecosystem conditions enable preemptive interventions, allowing natural resource decision-makers to prevent or mitigate risk (e.g., Berthet et al., 2016; Fujisaki-Manome et al., 2022). Among ecosystems, near-term forecasts of freshwater ecosystems (i.e., lakes, rivers, wetlands) may be particularly valuable, as freshwaters have been more negatively impacted by human activities and global change than terrestrial or marine ecosystems (Albert et al., 2021; Moorhouse & Macdonald, 2015), necessitating new approaches for their management.

The acute threats to freshwater ecosystems from global change (Field et al., 2014; Maasri et al., 2022) highlight the potential of near-term freshwater forecasting for advancing water management and freshwater resource use, as well as our understanding of freshwater ecosystems (Bradford et al., 2018, 2020; Coreau et al., 2009). Recent advances in next-generation technology for environmental monitoring of a broad range of freshwater ecosystem variables via in situ sensors, satellites, and internet of things (IoT) networks (Hestir et al., 2015; Marcé et al., 2016; Singh & Ahmed, 2021); development of diverse modeling, data assimilation, and uncertainty propagation methods in ecological studies (e.g., Chen et al., 2021; Heilman et al., 2022; Varadharajan et al., 2022); and a growing community of practice around ecological forecasting (Dietze & Lynch, 2019) are synergistically facilitating the increased production of near-term freshwater forecasts.

These advances present opportunities for freshwater scientists to integrate new tools and skills into forecasting efforts. In this paper, we (1) introduce key concepts in freshwater forecasting (Figure 1, Table 1); (2) analyze the recent progress of freshwater forecast development (i.e., the variables being forecasted and methods used, the performance of recently developed forecasts, and the application of forecasts for different end users); (3) identify future opportunities for advancing freshwater forecast production and use; and then (4) provide a unified conceptual framework with recommendations for galvanizing the freshwater quality forecasting community (Figure 2).

1.1 | Motivation for freshwater forecasting

Recent efforts in near-term freshwater forecasting have been motivated in many cases by the increased variability of freshwater ecosystems due to global change (Bradford et al., 2018; Gilarranz et al., 2022; Reggiani et al., 2022). Unfortunately, the increased ecosystem variability experienced by many freshwaters under global change precludes the use of historical baselines to inform our expectation of their future conditions

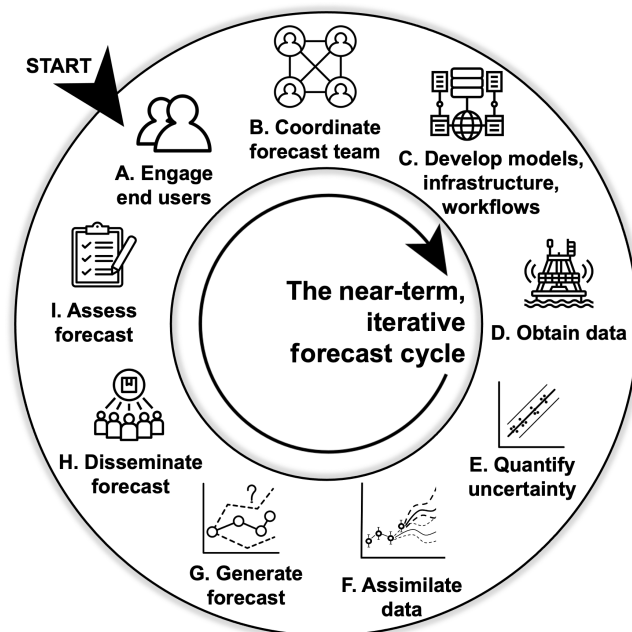


FIGURE 1 The near-term, iterative forecast cycle as implemented in a real-world setting for an operational forecasting system used by managers, decision-makers, or other end users (modified from Dietze, 2017). Freshwater forecast end users (e.g., managers, natural resource decision-makers) are engaged at the beginning of the forecast process (Step A) and a forecasting team is assembled and coordinated (Step B). The team will then work to develop the models, infrastructure, and workflows needed to produce forecasts (Step C), and begin obtaining input and validation data for forecasts (Step D). Before forecasts are generated, the uncertainty associated with the forecast should be quantified (Step E), and the most recent observational data can be used to update the model (Step F). Finally, a forecast is generated (Step G), disseminated to end users (Step H), assessed (Step I), and the cycle begins again by seeking end-user feedback to help improve the forecast and forecasting workflow (Step A).

(Bradford et al., 2018; Gilarranz et al., 2022; Millar & Woolfenden, 1999). Much of this variability is occurring on short time scales (days to seasons) and is manifested across physical, chemical, and biological freshwater variables. For example, intense droughts and floods due to climate change are altering water quantity in lakes, rivers, and wetlands (Davenport et al., 2021). Similarly, dissolved oxygen concentrations, a key control on freshwater quality, are declining in temperate lakes worldwide as water temperatures warm (Jane et al., 2021) and peak summertime algal bloom intensity increases (Ho et al., 2019). These examples are a few of the many physical, chemical, and biological changes that may lead managers to seek skillful forecasts providing actionable, decision-relevant information about future freshwater conditions.

Near-term forecasting provides critically needed opportunities for proactive, preemptive management of freshwater ecosystems to conserve and protect ecosystem health and services in response to increased variability under global change (Bradford et al., 2018, 2020; Reggiani et al., 2022). For example, if managers had advance warning of a future flood, they could preemptively re-route traffic from low-lying areas or coordinate evacuations to minimize human risk

TABLE 1 Definitions and examples of terms related to freshwater forecasting. Definitions are adapted from multiple sources (Carey et al., 2022; Dietze, 2017; Lewis et al., 2022; Lofton, Brentrup, et al., 2022; McClure et al., 2021; Thomas et al., 2020), with additional references for select terms provided in the table.

Term	Definition	Freshwater quality example
Automated workflow	A forecasting system that produces new forecasts on a set schedule or in response to another automated action and does not require a person to manually initiate forecast generation	A lake water temperature forecast that is triggered to be issued every 6 h as new meteorological forecasts are available from US NOAA
Data assimilation	Updating either initial conditions, model states, and/or model parameters through statistical comparison of model predictions to new observations not previously ingested by the model	Using a Kalman filter to update initial conditions in a weekly forecast of algal biomass concentrations
Data ingest	The process of making data accessible to a model (e.g., for data assimilation)	Chlorophyll-a sensor data are wirelessly streamed to a server and assimilated into the forecast model on a daily time step
Ensemble	Repeated model runs using different values of parameters, initial conditions, driver data, and/or random processes	Running a model to predict tomorrow's zooplankton biomass 100 times using different draws from a distribution of possible zooplankton growth rate parameter values, possible current zooplankton biomass values, and possible forecasted water temperatures
Forecast	Predictions of the future state of a physical, chemical, or biological freshwater variable that incorporates uncertainty	There is a 45% chance that dissolved iron concentrations will exceed a drinking water thresh next week
Forecast horizon	How far into the future a forecast is issued	A forecast of stream discharge 1 week into the future (a 1-week horizon) versus 1 day into the future (a 1-day horizon)
Forecast skill	The ability of a forecast to accurately predict real-world conditions	A forecast that predicts water temperature 1 week into the future with an RMSE of 1.4°C
Hindcast	A prediction of a time period that has already happened with specified uncertainty but using data that was withheld from the model during calibration and validation. Importantly, hindcasts use hindcasted, not observational, driver data to obtain predictions (see Jolliffe & Stephenson, 2012 for further information)	Daily forecasts of dissolved oxygen in 2018 using a model calibrated with data from 2015–2017 and archived meteorological forecasts from 2018
Iterative forecast	The process of repeatedly validating forecasts, updating model initial conditions and parameters, and issuing new forecasts as new data become available	A monthly forecast of fish biodiversity that is validated, updated, and re-issued as fish surveys are conducted between forecasts
Kalman filter (also extended or ensemble Kalman filters)	A method for statistically comparing model predictions and new observations to update the initial conditions and parameters of a model while accounting for uncertainty in both model predictions and observations (see Evensen, 2003 for further information)	Using today's observation of surface water turbidity to correct yesterday's model prediction of today's conditions, while accounting for both uncertainty in model predictions and uncertainty in turbidity sensor observations
Operational forecast	A forecast that is actively being updated and disseminated to end users	A 1-day-ahead water temperature forecast that is published online to inform community members and fishers
Prediction	Estimates of the state of a physical, chemical, or biological freshwater variable that may or may not include uncertainty; here, we focus solely on predictions of future conditions	The dissolved iron concentration will be 2.5 mg L ⁻¹ next week
Projection	A forecast based on a specific scenario that could or could not include specified uncertainty	A forecast of phytoplankton concentration next week assuming that algaecide will be applied by reservoir managers tomorrow

(Continues)

TABLE 1 (Continued)

Term	Definition	Freshwater quality example
Uncertainty partitioning (variance decomposition)	Quantification of the uncertainty contribution from different sources (e.g., uncertainty in initial conditions vs. uncertainty in forecasts of model drivers); usually these contributions and their interactions are summed to estimate “total” forecast uncertainty (see Lofton, Brentrup, et al., 2022 for a freshwater example)	Quantifying the contributions of meteorological forecast uncertainty used to drive a model versus uncertainty in model parameters to forecasts of lake cyanobacterial density
Uncertainty propagation	Quantitatively accounting for increased forecast uncertainty as the forecast progresses further into the future	The 95% predictive interval for tomorrow's forecasted water temperature is 15.1 to 15.8°C, while the 95% predictive interval for water temperature in 10 days is 11.8 to 20.9°C

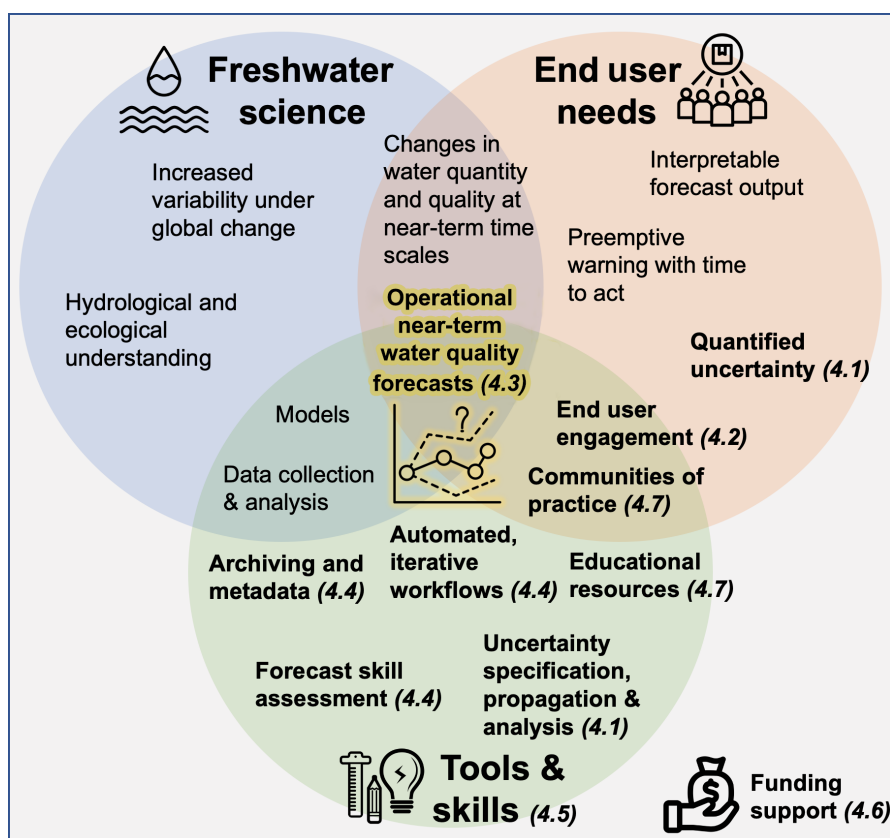


FIGURE 2 Conceptual framework of our recommendations for advancing the field of freshwater quality forecasting and operational near-term freshwater quality forecasts. Effective forecasts lie at the intersection of freshwater science, end-user needs, and relevant tools and skills, all of which require funding support. Agenda items recommended to advance the field of near-term freshwater quality forecasting are in bold, with the italicized number corresponding to sections under “Opportunities to advance near-term freshwater quality forecasting” in the text.

(Berthet et al., 2016). Similarly, a forecast of potential water quality impairment due to low dissolved oxygen levels or an intense algal bloom could allow managers to preemptively plan reservoir water releases, activate aeration systems (Quinn et al., 2005), or inform recreational beach closures (Choi et al., 2022). As much of the environmental variability currently exhibited in freshwater ecosystems is expected to intensify in the future under global change, it is critical to develop freshwater forecasts now.

1.2 | Overview of the near-term, iterative forecasting cycle

Many near-term forecasting systems use the iterative forecasting cycle as their foundation (Figure 1; Dietze, 2017). Unlike climate

forecasts that occur on multi-decadal (or longer) time scales and cannot easily be iteratively assessed during the typical span of an individual human's career, sub-daily to decadal ecological forecasts can be assessed and updated as soon as observational data of forecasted variables are available. While forecasts produced on daily or weekly versus decadal time scales are likely associated with substantially different management goals (e.g., mitigation of harmful algal blooms vs. eradication of invasive species, respectively), near-term forecasts as a whole are generally much more aligned with the time scales of environmental decision-making than multi-decadal or end-of-century projections (Dietze et al., 2018).

The near-term, iterative forecast cycle comprises several steps (Figure 1). Ideally, targeted freshwater forecast end users (e.g., managers, natural resource decision-makers) are engaged at the

beginning of the forecast process to identify: (1) whether a forecast would assist in achieving end user goals; (2) if yes, then which forecasted variables are needed; and (3) the frequency and method of forecast dissemination (e.g., Berthet et al., 2016; Fujisaki-Manome et al., 2022; Gerst et al., 2020; Figure 1, Step A). If end users have determined a freshwater forecast is needed, a forecasting team must be assembled and coordinated, likely including members with expertise in freshwater science, freshwater modeling, data collection (e.g., sensors, remote sensing), cyberinfrastructure, water management, and end-user engagement (Carey et al., 2022; Figure 1, Step B). The team will then work to develop the models, infrastructure, and workflows needed to produce forecasts (e.g., calibrate a model for the forecast site, install in situ sensors, identify which software or protocols will be used for forecast automation; Figure 1, Step C), and begin obtaining input and validation data for forecasts (Figure 1, Step D). Before forecasts are generated, the uncertainty associated with the forecast should be quantified so that a level of confidence in future predictions can be communicated to end users (Figure 1, Step E), and the most recent observational data can update the model (i.e., data assimilation; Table 1) so that the model is as closely aligned with current conditions as possible (Figure 1, Step F). Finally, a forecast is generated (Figure 1, Step G), disseminated to end users (Figure 1, Step H), assessed with observations when data become available (Figure 1, Step I), and the cycle begins again by seeking end-user feedback to help evaluate and improve the forecast and forecasting workflow (Figure 1, Step A). Key terms associated with the near-term, iterative forecast cycle are defined in Table 1.

1.3 | Importance of forecast uncertainty and assessment

A key component of the near-term iterative forecasting cycle is incorporating, quantifying, propagating, and reporting the uncertainty associated with estimates of future ecosystem states (Jakeman et al., 2019; Reggiani et al., 2022). Consequently, we reserve the term “forecast” to refer only to future estimates that include uncertainty, and use the more general term “prediction” to refer to future estimates (deterministic or probabilistic) that may or may not include uncertainty. While predictions of future conditions may or may not include uncertainty, forecasts always include uncertainty (Table 1). Uncertainty in near-term freshwater forecasts can arise from a variety of sources, including model structure, parameters, and driver variables, as well as estimates of current (initial) conditions used as the starting point for running forecast models (Jakeman et al., 2019). When a forecast is produced, these uncertainties propagate (e.g., error in forecasted model driver variables leads to error in forecast model output; Table 1), resulting in increased uncertainty as the forecast progresses farther into the future (Dietze, 2017). Specifying the uncertainty associated with a model's prediction of future conditions, summed from the uncertainty sources listed above and their interactions, facilitates informed decision-making by forecast end users.

Once a forecast has been generated and disseminated (Figure 1, Steps G, H), there are many ways in which forecast performance and uncertainty can be assessed (Figure 1, Step I; see Table S1 for examples of metrics developed to compare forecasts with observations and assess forecast uncertainty). In addition to comparing forecasts with observations, evaluation of forecasts using simple null or “naïve” models (e.g., Perretti et al., 2013) has been identified as a best practice to test whether the chosen forecast model outperforms naïve forecasts that assume the world is static (Harris et al., 2018; Lewis et al., 2022; White et al., 2019). For example, a naïve model might assume that tomorrow's conditions will resemble today's conditions with added noise (a persistence forecast), or that they will be the same as historical day-of-year conditions summarized from previous observations (e.g., a historical mean forecast, or “climatology forecast” if enough years of data are available; Jolliffe & Stephenson, 2012). Finally, a newly developed forecasting model can also be compared with the previously best-performing forecasting model for a specific target variable (e.g., Jin et al., 2019).

1.4 | Variations on the iterative forecasting cycle and forecasting-adjacent approaches

While the cycle depicted in Figure 1 contains all of the steps in near-term iterative forecasting (sensu Lewis et al., 2022), not all forecasting systems implement each step. For example, near-term freshwater forecasts can be characterized depending on whether the forecast is produced with data assimilation (Figure 1, Step F; Table 1). Data assimilation can be conducted in multiple ways: for example, by re-fitting a forecast model with the most recent observations, directly updating the initial conditions of the model to match recent observations, or using a statistical technique such as an ensemble Kalman filter or particle filter to adjust model future predictions to be consistent with recent observations, given uncertainty in both model predictions and observations (Cho et al., 2020; Dietze, 2017). Data assimilation has been shown to improve the performance of freshwater future predictions (Cho et al., 2020), so it has much potential for improving forecast usability, but it is also computationally intensive and requires cyberinfrastructure for connecting data to models for real-time forecasting.

Another way forecasting systems can be characterized is by their workflows (Figure 1, Step C). Forecast workflows can either be manual (i.e., steps in the iterative forecasting cycle are completed by a human) or automated (i.e., steps are triggered via cyberinfrastructure and occur without human intervention), depending on the goals of the forecasting project, forecast horizon, and frequency of data assimilation. For example, data ingest, defined as the process of making data accessible to the model, can be done manually (e.g., a researcher digitizes new data; White et al., 2019) or it can be automated (e.g., sensor data are wirelessly streamed to a server and assimilated into the forecast model via cloud computing; Daneshmand et al., 2021). Other components of

forecast workflows, including running models, creating forecast visualizations, and disseminating forecasts to end users, can also be automated (e.g., Baracchini et al., 2020). Automated, iterative workflows are often necessary for generating operational freshwater forecasts, defined as forecasts that are routinely produced and disseminated to the public and other end users (e.g., Ayzel, 2021; Emerton et al., 2018; Fry et al., 2020; Nicolle et al., 2020). Manual forecast workflows are sometimes produced in academic settings as a tool for answering freshwater science research questions (e.g., Zwart et al., 2019), model testing, or when the temporal frequency of data collection and analysis is low enough or the forecast horizon is long enough (seasonal to annual forecasts) that automated, iterative workflows are not needed (e.g., Messenger & Olden, 2018). For example, if a forecasting system is making 1 to 10-year-ahead forecasts of freshwater fish abundance using models run on an annual time step, there is likely no need for an automated system; in contrast, if a forecasting system is making hourly forecasts of floods, an automated iterative workflow would likely be critical.

The near-term iterative forecasting cycle (Figure 1) can also be applied to predictive approaches which are critical for supplementing, advancing, and supporting forecasting system development and operation. In particular, hindcasting and model projections can be highly informative for developing near-term freshwater forecasts and informing freshwater decision-making (Dietze, 2017; Jolliffe & Stephenson, 2012). Hindcasting, defined as developing forecasts for a time period which has already occurred (Jolliffe & Stephenson, 2012), is often done to test new forecast models (Kelley, 2022) or evaluate how forecast models perform in new ecosystems (Woelmer et al., 2022). In a strict interpretation of hindcasting (referred to as retroactive forecasting by Jolliffe & Stephenson, 2012), the only difference between forecasting and hindcasting workflows is that the date for which the prediction is produced is either in the future (forecast) or the past (hindcast), while all other components of the workflow (e.g., data assimilation, propagation of uncertainty, forecasted model driver data) are identical.

Model projections entail running models into the future using a set of underlying assumptions or scenarios, thereby predicting a future predicated on specific conditions. For example, Lewandoski and Brenden (2022) developed model projections of whether continued lampricide application at historical levels would achieve invasive sea lamprey suppression targets in Lake Superior, USA, by 2040. While projections can include uncertainty and provide preemptive decision-making guidance, they cannot be used to make probabilistic statements about future events (unlike forecasts or hindcasts) since it is unknown which scenario is most likely to occur (Dietze, 2017). Hindcasting and model projection techniques can also be combined for assessing possible alternative management actions. For example, Bourgeaux et al. (2022) produced projections for a past time period to assess whether managed water releases from a floodplain lake could have achieved a target rate of escapement from the lake to downstream habitat for threatened European eels.

1.5 | Water quantity versus water quality forecasting

Near-term forecasting of freshwater *quantity* (e.g., runoff, discharge, water level) has been a focus within hydrology for decades (Jain et al., 2018; Troin et al., 2021). Progress in water quantity forecasting has been motivated by the substantial risk to human health and property posed by flooding and drought, which have both become more acute under global change (Han & Coulibaly, 2017; Jain et al., 2018; Kikon & Deka, 2022). These risks have prompted the creation of government-supported agencies and public and private centers to support water quantity forecasting at local, regional, national, and international scales (Troin et al., 2021) and grassroots communities of practice focused specifically on water quantity forecasting (e.g., Schaake et al., 2007). These communities facilitate interdisciplinary collaboration and knowledge transfer, and subsequently enable the application of water quantity forecasting techniques at new sites.

The development of robust forecast systems for water quantity has been enabled in many cases by long-term government funding for sensor networks (Gunn et al., 2014) and well-established modeling approaches (Han & Coulibaly, 2017; Kikon & Deka, 2022; Mosavi et al., 2018; Troin et al., 2021). As a result, many water quantity forecasts are now automated and disseminated to water managers and the public at scales ranging from individual rivers or reservoirs to national and global scales (e.g., Ayzel, 2021; Baracchini et al., 2020; Emerton et al., 2018; Fry et al., 2020; Nicolle et al., 2020). Robust water quantity forecast systems have in turn enabled the assessment of forecast economic value and utility to managers in various ways, including identifying which reservoir inflow forecast horizons are most useful to managers (Turner et al., 2020), estimating profit for farmers following forecast-informed water allocation (Giuliani et al., 2020), and assessing managers' ability to use streamflow forecasts to achieve a target reservoir level (Turner et al., 2017). Despite these advances in water quantity forecasting, more work is needed to fully integrate water quantity forecasts into management decision-making workflows (Rayner et al., 2005).

To date, the creation and public dissemination of freshwater *quality* forecasts have been less common than for water quantity. While much effort has been dedicated to future prediction of select water quality variables, for example, cyanobacterial density (Rouso et al., 2020) or water temperature (Baracchini et al., 2020; Ouellet-Proulx, St-Hilaire, & Boucher, 2017; Sadler et al., 2022; Zhu & Piotrowski, 2020), agency- and/or center-based support and routine dissemination of water quality forecasts lags behind flood and stream/river discharge forecasting.

However, recent developments suggest that additional efforts in freshwater quality forecasting may lead to substantial advances in the near future. For example, the development of water quality monitoring sensor networks and the ability to wirelessly stream water quality data to the cloud (Hestir et al., 2015; Marcé et al., 2016) permit updating of forecast models and forecasts in more remote locations and at higher resolution than was previously possible. Moreover, the

development of freshwater quality forecasts to inform natural resource management is now a priority for some government agencies (e.g., Bradford et al., 2020; NOAA, National Oceanic and Atmospheric Administration, 2014). Concurrently, interdisciplinary communities of practice, such as the Ecological Forecasting Initiative (Dietze & Lynch, 2019), are enabling idea generation and knowledge transfer among forecasters that could be used to advance the performance and utility of freshwater quality forecasts.

1.6 | Study aims: Reviewing the state-of-the-art in freshwater forecasting

In sum, freshwater *quality* forecasting may be poised to advance rapidly in the near future, but the extent to which existing freshwater quality forecast workflows, methods, and performance compared with freshwater *quantity* forecasting remains unknown. To assess the field of near-term freshwater forecasting, we conducted a state-of-the-art literature review (sensu Grant & Booth, 2009) to synthesize and quantify recent progress in near-term forecasting of freshwater *quality*. We specifically focused on water quality as an emerging field within ecological forecasting to examine the progress in freshwater quality relative to freshwater quantity to date as well as identify potential future opportunities and challenges to overcome. Our questions centered around three focal areas:

- (1) *Forecast variables, time scales, models, performance, and uncertainty*: Which freshwater variables and temporal scales are most commonly targeted for near-term forecasts, and what modeling methods are most commonly used to develop these forecasts? How is the performance of freshwater quality forecasts assessed, and how skillful are forecasts? How is uncertainty typically incorporated into water quality forecast output?
- (2) *Forecast infrastructure and workflows*: Are automated, iterative workflows commonly used in near-term freshwater quality forecasting? How often are forecasts validated and archived?
- (3) *Human dimensions of forecasts*: What are the stated motivations for creating near-term freshwater quality forecasts, and who are the most common end users (if any)? How are end users engaged in forecast development?

Below, we present our findings for each of these focal areas. We then synthesize across the focal areas with recommendations to advance the performance and scope of near-term freshwater *quality* forecasts and their utility to resource managers and other end users in an era of global change.

2 | MATERIALS AND METHODS

We conducted a state-of-the-art literature review (sensu Grant & Booth, 2009) of freshwater forecasting to assess the state of

the field, recent progress, and ongoing challenges (Figure 3; see Text S1 for detailed methods). First, we conducted a search for peer-reviewed literature published in the last 5 years (since 1 January 2017) that included four key concepts (freshwater, forecasting, freshwater forecast target variables, and a combined resource management/global change concept) using the Web of Science™ Core Collection database (see Text S1 and Tables S2, S3 for detailed methods). All papers were accessed before 17 February 2022.

Second, we conducted a title screen for relevance. We then carried out a full-text screen to select a subset of papers for in-depth analysis. During the full-text screen, we only included papers for in-depth analysis when (1) the paper presented a prediction into the future from the perspective of the model (meaning no environmental observations were used as model input during the future prediction period); (2) the time scale of the future prediction was near-term (minimum forecast horizon ≤ 10 years; see Table 1 for the definition of forecast horizon) or long-term; (3) the prediction was a forecast, hindcast, or projection and included uncertainty; and (4) the target variable was freshwater *quantity* or *quality*. We included hindcasts and projections in addition to forecasts in the in-depth analysis because (1) the iterative, near-term forecasting cycle (Fig. 1) can be applied to all three predictive approaches; (2) both forecasts and model projections are used for freshwater management decision-making; and (3) we found that differentiating between forecasts and hindcasts was often not possible based on the information presented in peer-reviewed papers and their supplementary materials. During the full-text screen, we also categorized the modeling approach for all papers following the classifications in Table 2.

Third, we further analyzed each paper presenting a near-term freshwater quality forecast, hindcast, or projection with uncertainty using a standardized set of questions with answers tabulated in matrix form (Table S3) that addressed our focal research questions. Finally, we used the data from both our full-text screen and

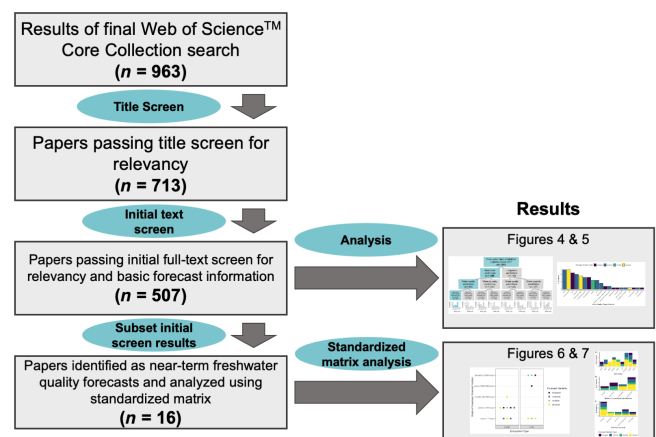


FIGURE 3 Freshwater forecasting state-of-the-art review workflow. All tabular data are available in the Environmental Data Initiative repository (Lofton et al., 2022b), and all analysis code is available in the Zenodo repository (Lofton et al., 2022a).

TABLE 2 Definitions and examples of terms used during state-of-art review analysis. Definitions of prediction and forecasting modeling approaches are adapted from Lewis et al. (2022). Definitions of methods for incorporating uncertainty into forecasts are adapted from Dietze et al. (2021). References for definitions of forecast assessment metrics are provided in the table.

Term	Definition	Example
Prediction and forecasting modeling approaches		
Empirical model (non-time series model)	Uses correlations or statistical relationships among variables to make predictions but does not explicitly account for time series attributes of the data	Multiple regression model
Empirical model (time series model)	Uses correlations or statistical relationships among variables to make predictions and explicitly accounts for time series attributes of the data such as autocorrelation and trends	Autoregressive integrated moving average (ARIMA) model
Machine learning model	Uses time series data of predictors and a target variable (predictand) to train an algorithm that predicts the value of the target variable one or more time steps into the future; predictors may include climate/meteorological variables, waterbody variables (e.g., the previous day's water temperature), and/or watershed variables (e.g., the previous day's stream nutrient loading)	Artificial neural network model
Process-based model	Explicitly attempts to simulate water quality processes but is not physically based and/or is simple enough to be solved analytically; can include representation of both internal (e.g., population growth) and/or watershed (e.g., nutrient loading) processes	Age-structured population model
Simulation model	Explicitly attempts to simulate water quality processes for a physically based ecosystem or watershed and is too complex to solve analytically; can include representation of both internal (e.g., in-river biochemical oxygen demand) and/or watershed (e.g., stream inflow) processes	A coupled three-dimensional hydrodynamic-water quality model for a lake
Methods of incorporating uncertainty into forecasts		
Assimilates	The forecast system iteratively updates uncertainty in initial conditions and model parameters by comparing model predictions to new data as they become available	Using an ensemble Kalman filter to update the uncertainty around a phytoplankton growth rate parameter using the most recent observation of lake chlorophyll-a
Data-driven	The forecast system contains the concept of uncertainty and the degree of uncertainty is informed by data	Confidence interval around a fitted multiple regression line that uses nutrient concentrations and water temperature to predict chlorophyll-a concentrations
Presents	The forecast system contains the concept of uncertainty but values are not derived from data	Using different representative concentration pathway (RCP) scenarios as model drivers to predict the distribution of an aquatic invasive species in 10 years
Propagates	The forecast system translates uncertainty in inputs into uncertainty in forecasts, and quantifies how this uncertainty increases into the future	Running a model multiple times with different draws from distributions of parameters, driver data, and initial conditions (i.e., an ensemble) to predict dissolved oxygen from 1–10 days into the future

standardized matrix analysis to assess the state of freshwater forecasting and identify areas of recent progress and ongoing challenges (see Text S1: *Literature review methods* for further details). While our focus was on water quality forecasts, we analyzed all papers describing future predictions of freshwater variables to compare the fields of freshwater *quality* versus *quantity*.

All data from the state-of-the-art literature review are available in the Environmental Data Initiative repository (Lofton et al., 2022b) and all analysis-related code is published in the Zenodo repository (Lofton et al., 2022a).

Two important caveats to our review are that operational near-term freshwater quality forecasts produced by government agencies and private entities may not be routinely published in peer-reviewed articles and that not all forecasting-relevant research results in the production of near-term forecasts. For example, the United States National Oceanic and Atmospheric Administration (NOAA) provides both annual forecasts of cyanobacterial bloom intensity (Stumpf et al., 2016) as well as near-term bloom position future predictions for Lake Erie (U.S. NOAA, Center for Operational Oceanographic Products and Services, 2018), but

neither of these products were retrieved by our literature search. Moreover, in select cases information on operational near-term water quality forecast workflows may not be published for water security reasons, for example, risk of cyberattack on water distribution infrastructure (Housh & Ohar, 2018). Finally, papers may report research that is important for advancing near-term freshwater quality forecasting but does not actually produce a forecast (e.g., Sadler et al., 2022; Zwart et al., 2019).

3 | RESULTS

3.1 | Forecast variables, time scales, models, performance, and uncertainty

Our literature search retrieved 963 papers, of which 507 were identified as describing future predictions of freshwater variables during our full-text screen (Figures 3 and 4). Below, we report results from all 507 “freshwater future prediction papers” to compare the fields of freshwater *quality* versus *quantity*. Altogether, 16 out of the 507 papers presented near-term water quality forecasts, hindcasts, or projections with uncertainty and were analyzed using our standardized set of questions (Table S3).

3.1.1 | Water quantity dominates current freshwater future prediction efforts

Water *quantity* variables (defined as lake or reservoir inflow, stream or river discharge, water level, or flood risk) were much more commonly predicted than any other freshwater variables (83%, $n = 424$ of 507 freshwater future prediction papers; Figure 4). The vast majority (94%) of these 424 water quantity papers presented future predictions at near-term (minimum forecast horizon ≤ 10 years) time scales. However, 50% of water quantity future prediction papers ($n = 214$ of 424) did not include uncertainty associated with future predictions.

Machine learning models ($n = 191$ of 424 papers) and simulation models ($n = 130$) were the most frequent model types identified among papers presenting water quantity future predictions (Figure 4; see Table 2 for model type definitions). Machine learning models were the most common (140 of 231; 61%) model type in papers presenting near-term water quantity future predictions without uncertainty, while simulation models were the most common (88 of 235; 37%) model type for future predictions presented with uncertainty (Figure 4). Simulation models, typically including both internal (e.g., in-lake evaporation) and watershed (e.g., stream inflow) processes when relevant, were also the most popular choice ($n = 18$ of 27) among long-term (minimum horizon > 10 years) water quantity future predictions (Figure 4). While most papers presented only one modeling approach, 13% of the water quantity future prediction papers ($n = 57$ of 424) used more than one modeling approach, with machine learning

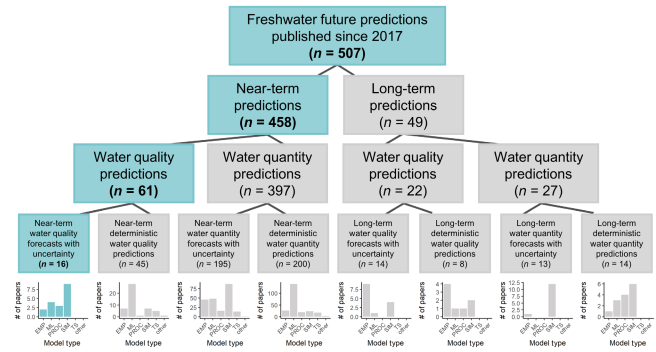


FIGURE 4 Results of the initial screen for state-of-art review. Water quantity is defined as lake or reservoir inflow, stream or river discharge, water level, or flood risk. Near-term is defined as having a minimum forecast horizon ≤ 10 years. Future predictions must have specified uncertainty to be considered a forecast; here, forecast includes forecasts, hindcasts, and projections. EMP, empirical non-timeseries model; ML, machine learning model; other, other model type; PROC, process-based model; SIM, simulation model; TS, time series model.

and empirical models being most commonly used in the same paper ($n = 20$ papers).

3.1.2 | Water quality future predictions target diverse ecosystem variables

The 16% of papers ($n = 83$ of 507 freshwater future prediction papers) predicting a water *quality* variable (at either near-term or long-term horizons) targeted a wide diversity of water quality metrics (Figure 5). Popular target water quality variables spanned physical metrics (e.g., water temperature, $n = 13$ papers; sediment/turbidity, $n = 9$), chemical metrics (e.g., dissolved oxygen, $n = 13$; phosphorus or nitrogen concentrations, $n = 10$; conductivity/salinity, $n = 8$), and biological metrics (e.g., fish abundance or distribution, $n = 11$; phytoplankton abundance, $n = 8$). Among water quality future prediction papers, 64% (53 of 83 papers) did not incorporate uncertainty.

3.1.3 | Most freshwater quality future predictions are near-term

The majority (73%; $n = 61$ of 83) of water *quality* papers presented future predictions at near-term (minimum forecast horizon ≤ 10 years), rather than long-term, time scales (Figure 4). Papers presenting water quality future predictions at long-term horizons more often included uncertainty compared with those presenting water quality future predictions at near-term horizons (64% vs. 26%, respectively).

Among the 16 identified near-term water quality forecasts, hindcasts, or projections with uncertainty, minimum forecast horizons ranged from sub-daily (4 h) to decadal (10 years), with three papers presenting a maximum forecast horizon > 10 years (Figure 6a,b; Table S4). Papers presenting water quality forecasts,

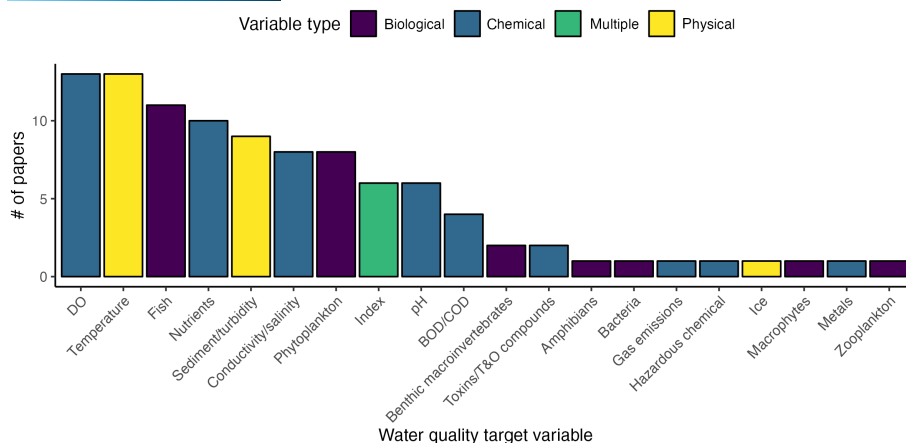


FIGURE 5 Frequency of water quality variables predicted in papers presenting freshwater future predictions. BOD/COD, biochemical oxygen demand/chemical oxygen demand; DO, dissolved oxygen; index, water quality index calculated from multiple freshwater variables; toxins/T&O compounds, toxins/taste and odor compounds.

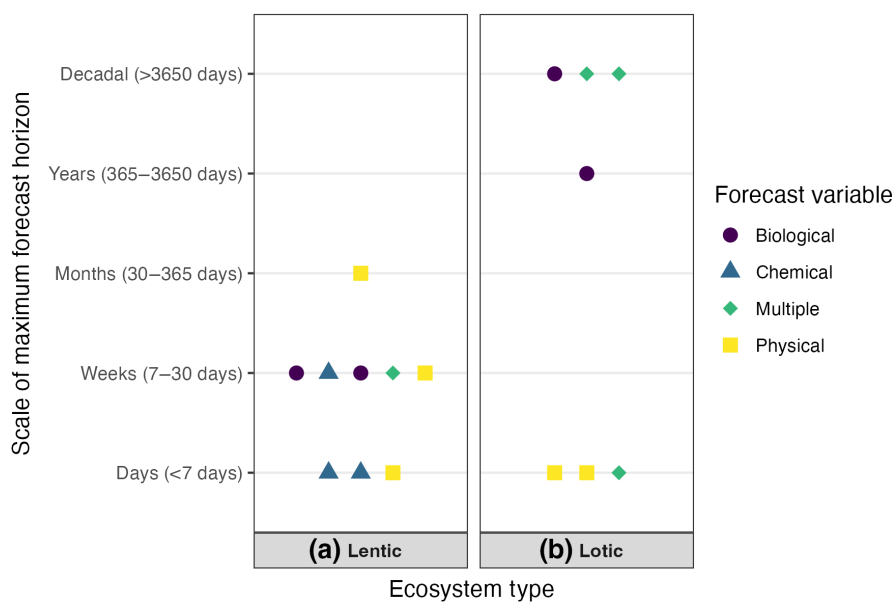


FIGURE 6 Near-term water quality forecast ecosystem type, target variable type, and maximum forecast horizon. Lentic = standing water (e.g., lake, reservoir); lotic = flowing water (e.g., stream, river). Each data point represents one study. See Table S4 for data underlying this figure.

hindcasts, or projections for lotic ecosystems tended to either have daily (<7 days) or decadal (≥ 10 years) maximum horizons, while forecasts in lentic ecosystems had horizons ranging from daily to monthly (30–365 days) scales. There was no observable pattern relating the type of water quality target variable (physical, chemical, biological, or multiple) to maximum forecast horizon.

3.1.4 | Multiple modeling methods are being used to predict freshwater quality

Machine learning models ($n = 34$ of 83 papers), simulation models ($n = 22$), and empirical models ($n = 22$) were the most frequent model types identified among papers presenting future predictions of water quality (Figure 4, see Table 2 for model type definitions).

Similar to water quantity future prediction papers, machine learning models were the most common model type in papers presenting near-term water quality future predictions without uncertainty, while simulation models, typically including both internal (e.g., in-lake algal growth) and external (e.g., watershed nutrient inputs) processes when relevant, were the most common model type for near-term water quality future predictions presented with uncertainty (Figure 4). Empirical, non-time series models (defined in Table 2) were most often used for long-term water quality future predictions (Figure 4). Ten percent of water quality future prediction papers ($n = 8$ of 83) used more than one modeling approach. However, we found that only 5 of 16 near-term freshwater quality forecasting papers compared two or more models, with only three papers comparing the primary forecast model with a null model (defined as a persistence, historical mean, or first-order autoregressive forecast; Figure 7c).

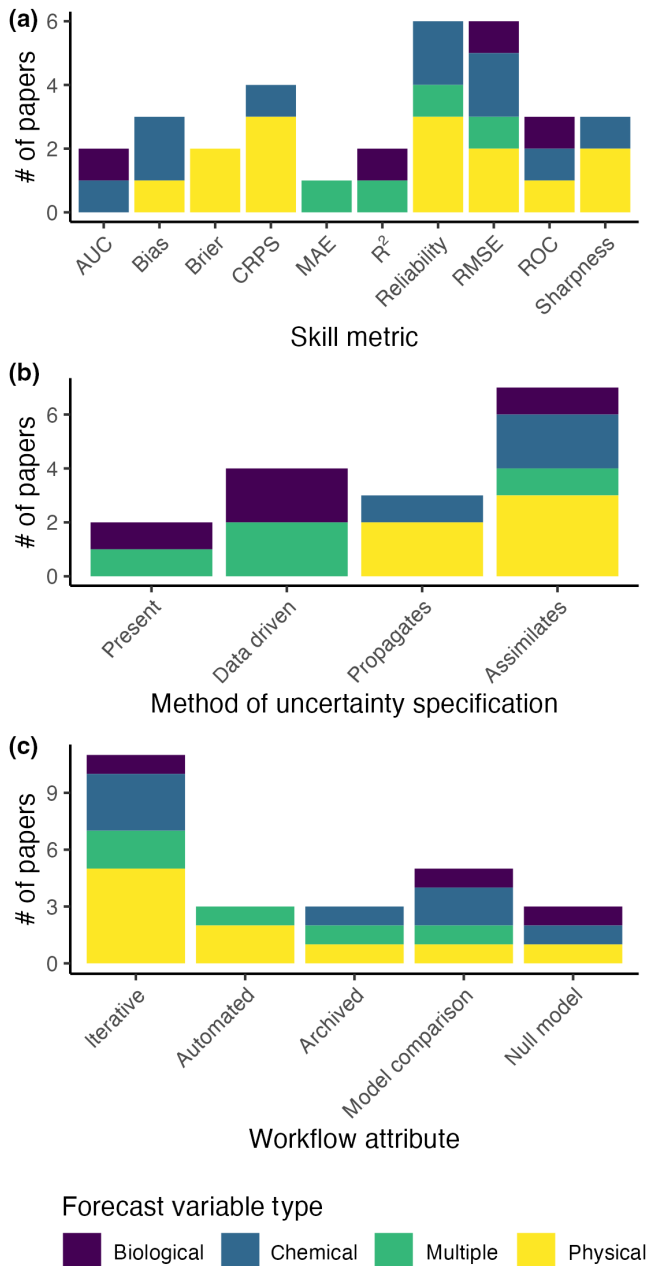


FIGURE 7 Frequency of (a) model calibration, validation, and forecast assessment metrics, (b) uncertainty specification methods, and (c) workflow attributes for near-term water quality forecasts. See Table S1 for definitions of forecast assessment metrics in (a); see Table 2 for uncertainty specification methods in (b); see Table 1 and Table S3 for definitions of workflow attributes in (c) and Table S4 for data underlying this figure.

3.1.5 | Water quality forecast performance is usually assessed, but comparison of forecasts is challenging

Due to the wide variety of forecast target variables and assessment metrics presented among the near-term water quality papers we reviewed, we evaluated forecast performance based on the metrics provided by the authors in each paper. Five of sixteen water quality papers

did not present a quantitative assessment of forecast performance. Of those that did provide quantitative assessment, root mean square error (RMSE; Table S1), reliability diagrams (Bröcker & Smith, 2007; Table S1), and continuous ranked probability score (CRPS; Table S1) were the most commonly used assessment metrics (Figure 7a).

Across studies, forecast performance varied among target variables and forecast horizons, and comparison among forecasts was often difficult due to differences in forecast assessment methodology (Table 3). However, three studies forecasting reservoir and river water temperature reported CRPS <1.1°C (see Table S1 for definition and interpretation of CRPS) for forecast horizons from one to 16 days into the future (Table 3; Ouellet-Proulx, Chimi Chiadjeu, et al., 2017; Ouellet-Proulx, St-Hilaire, et al., 2017; Thomas et al., 2020). An additional study reported greater skill in seasonal (1- to 4-month-ahead) forecasts of bottom water temperatures compared with surface waters across four lakes and reservoirs in Spain, Norway, Germany, and Australia (Table 3; Mercado-Bettin et al., 2021), which the authors attributed to greater thermal inertia in the bottom waters of lakes. Two studies provided forecasts of nitrogen (N) and phosphorus (P) concentrations with reasonable skill up to 5 days ahead (Jin et al., 2019; Peng et al., 2020). Additional near-term water quality forecasts showed a reasonable skill for dissolved oxygen, methane ebullition emissions, turbidity, and conductivity (Table 3). While three studies presented near-term forecasts of phytoplankton in lakes, differences in both their forecast target variables and methodology precluded comparison (Liu et al., 2020; Mu et al., 2021; Page et al., 2018). Specifically, two studies assessed their forecasts by converting the forecast to binary predictions (occurrence/non-occurrence of a bloom event; Mu et al., 2021) and one additional study provided probabilistic forecasts of chlorophyll-a concentrations up to 10 days into the future (Table 3; Page et al., 2018).

3.1.6 | Less than half of water quality future predictions incorporate uncertainty

Notably, only 36% of papers (30 of 83) that presented predictions of freshwater quality variables into the future incorporated uncertainty (Figure 4). Within near-term water quality forecasts, hindcasts, and projections with uncertainty ($n = 16$), multiple methods of uncertainty specification were used (Figure 7b). For example, some papers included the concept of uncertainty but did not quantify it (e.g., used different land use change scenarios as model drivers; Chen et al., 2020; these papers were categorized in the “present” category for uncertainty inclusion methods following Table 2), whereas others quantified and propagated uncertainty while also iteratively assimilating new observations to constrain initial conditions (e.g., Baracchini et al., 2020; Liu et al., 2020; these papers were categorized in the “assimilates” category for uncertainty inclusion methods following Table 2; Figure 7b). Of the 16 near-term freshwater quality papers that reported uncertainty, four were projections (i.e., used scenarios to generate future predictions) and 12 were forecasts or hindcasts. A majority ($n = 7$ of 12) of near-term freshwater quality forecasts

TABLE 3 Performance of near-term water quality forecasts as reported in reviewed papers. Performance is given as a range spanning the full forecast horizon unless otherwise specified (e.g., a continuous ranked probability score (CRPS) of 0.77–1.08°C for a 1–5 day water temperature forecast represents the full range of CRPS reported across the 1–4 and 5-day forecast horizons). In cases when multiple forecast models were used, performance is reported for the focal or best-performing forecast model(s) as identified by the authors (i.e., performance of null or baseline models is not reported). In cases when multiple forecast methodologies for a single model were trialed (e.g., multiple forecasts generated with a single model but with different ensemble sizes), performance is reported across all methodologies. \cong is used in cases where values are approximated from figures rather than reported in text or tables. Forecast assessment methods that cannot readily be summarized in table format (e.g., reliability plots, tercile plots) were omitted. AUC, area under the receiver operating characteristic curve; CI reliability, percent of observations that fall into the 95% confidence interval; CRPS, continuous ranked probability score; MAE, mean absolute error; MSE, mean square error; NSE, Nash-Sutcliffe efficiency; R^2 , coefficient of determination; RMSE, root mean square error; RMSEP, root mean square error in probability; ROCSS, receiver operating characteristic skill score; RPSS, ranked probability skill score. Descriptions of these metrics are given in [Table S1](#).

Forecast variable type	Water quality variable	Paper	Year	Ecosystem	Forecast horizon	Length of forecast assessment period	Forecast performance
Physical	Water temperature (surface)	Ouellet-Proulx, St-Hilaire, et al.	2017	River	1–5 days	5 summers (15 June to 15 September 2009–2014)	CRPS = 0.77–1.08°C across two rivers Brier score for early warning (18°C) \cong 0.12–0.18 Brier score for threshold exceedance (20°C) \cong 0.01–0.05
Physical	Water temperature (surface)	Ouellet-Proulx, Chimi Chadjieu, et al.	2017	River	1–5 days	5 summers (15 June to 15 September 2009–2014)	CRPS = 0.24–0.8°C across two rivers Brier score = 0.01–0.22 across three temperature thresholds (16°C, 18°C, 20°C)
Physical	Water temperature (multiple depths)	Thomas et al.	2020	Reservoir	1–16 days	475 days (28 August 2018–15 December 2019)	CRPS = 0.23–0.80°C averaged across all depths Bias = 0.03–0.05°C averaged across all depths RMSE = 0.44–1.4°C averaged across all depths CRPS skill score (improvement relative to a baseline or null model, where 0 indicates no improvement, 1 indicates a perfect forecast, and values below 0 indicate worse performance than the null) = –0.07–0.39 averaged across all depths CI reliability = 79–85% averaged across all depths
Physical	Water temperature (lake outlet)	Baracchini et al.	2020	Lake	3 h–4.5 days	2 days (28 June–30 June 2017)	RMSE = 0.8°C during upwelling event
Physical	Water temperature (multiple depths)	Mercado-Bettin et al.	2021	Lake and reservoir	1–4 months	23 years (November 1993–November 2016)	ROCSS significant (representing forecast ability to predict above normal, normal, or below normal temperatures) for below normal winter surface water temperatures in 1 of 4 study lakes; for above normal spring surface temperatures in one lake; for below normal spring surface temperatures in one lake; for above and below normal summer surface temperatures in one lake; for above or below normal winter bottom temperatures in two lakes; for above or below normal spring bottom temperatures in three lakes; for above or below normal summer bottom temperatures in three lakes; for above or below normal autumn bottom temperatures in one lake RPSS significant (representing forecast improvement over climatology null model) for surface waters in winter for one of four study lakes; in spring for three of four; in summer for none; RPSS not significant for bottom waters in winter; RPSS significant for bottom waters in spring and summer for one of four lakes

TABLE 3 Continued

Forecast variable type	Water quality variable	Paper	Year	Ecosystem	Forecast horizon	Length of forecast assessment period	Forecast performance
Physical	Turbidity	Jin et al.	2019	River	4 h	3 months (28 July 2014–26 October 2014)	RMSE = 0.0024 NTU MAE = 0.0421 NTU MRE = 0.2222 NTU R ² = 0.9698 NTU
Chemical	Ammonia-nitrogen	Jin et al.	2019	River	4 h	3 months (28 July 2014–26 October 2014)	RMSE = 0.0487 mg L ⁻¹ MAE = 0.1045 mg L ⁻¹ MRE = 0.1991 mg L ⁻¹ R ² = 0.9085 mg L ⁻¹
Chemical	Electroconductivity	Jin et al.	2019	River	4 h	3 months (28 July 2014–26 October 2014)	RMSE = 0.0068 μS cm ⁻¹ MAE = 0.0635 μS cm ⁻¹ MRE = 0.3583 μS cm ⁻¹ R ² = 0.9424 μS cm ⁻¹
Chemical	Dissolved oxygen	Peng et al.	2020	Lake	0–5 days	2 years (2017–2018)	Bias = 0.008–0.022 mg L ⁻¹ RMSEP skill score (percent improvement over baseline model) ≅ 14%–37% CRPS skill score (percent improvement over baseline model) ≅ 24%–44%
Chemical	Ammonium-nitrogen	Peng et al.	2020	Lake	0–5 days	2 years (2017–2018)	Bias = 0.001–0.028 mg L ⁻¹ RMSEP skill score ≅ -3%–18% CRPS skill score ≅ 3%–32%
Chemical	Total phosphorus	Peng et al.	2020	Lake	0–5 days	2 years (2017–2018)	Bias = 0.001–0.003 mg L ⁻¹ RMSEP skill score ≅ 48%–78% CRPS skill score ≅ 51%–76%
Chemical	Total nitrogen	Peng et al.	2020	Lake	0–5 days	2 years (2017–2018)	Bias = 0.008–0.016 mg L ⁻¹ RMSEP skill score ≅ 6%–42% CRPS skill score ≅ 8%–40%
Chemical	Methane ebullition rate	McClure et al.	2021	Reservoir	1–2 weeks	5 months (17 June–7 November 2019)	RMSE = 0.48–0.53 ln (mg CH ₄ m ⁻² day ⁻¹) NSE = 0.76–0.80 ln (mg CH ₄ m ⁻² day ⁻¹)
Biological	Chlorophyll-a (integrated over top 5–7 m of water column)	Page et al.	2018	Lake	1–10 days	2–3 years (2008–2010 for one study lake and 2008–2009 for the other)	RMSE ≅ 2.75–18.5 mg m ⁻³ across two lakes
Biological	Probability of microcystin health advisory level exceedance	Liu et al.	2020	Lake	1–5 days	1 summer (July–October 2017)	Bias (binary) = 0.84–1.14 for health advisory levels ranging from 0.3–20 μg L ⁻¹ Pierce skill score = 0.19–0.41 for health advisory levels ranging from 0.3–20 μg L ⁻¹ AUC = 0.87 for a health advisory level of 6 μg L ⁻¹
Biological	Algal bloom occurrence	Mu et al.	2021	Lake	1–7 days	Assessed hindcasts generated using 10% of available satellite imagery dataset spanning 2002–2018 (where total n = 872 images)	84.3%–97.7% of modeled pixels with CCI% = 0.5–1 for bloom occurrence

and hindcasts both propagated uncertainty and assimilated new observations (Figure 7b). All papers presenting projections were categorized as having uncertainty “present” or “data-driven” (see Table 2 for definitions of uncertainty categories).

3.2 | Forecast infrastructure and workflows

Overall, while most of the near-term freshwater quality forecasts we analyzed were generated using the iterative forecasting cycle framework ($n = 11$ of 16; Figure 1, Table S4), only three papers representing two forecasting systems reported producing forecasts via automated workflows (Figure 7c; Baracchini et al., 2020; Carey et al., 2022; Thomas et al., 2020). In both cases, the authors described automated forecast workflows that included the steps of (1) retrieval of new observational data and meteorological forecasts to force a freshwater ecosystem forecasting model; (2) assimilation of observational data to inform model initial conditions and parameters; (3) model runs; and (4) delivery of the automated forecast to end users via a web interface or other web-based communication.

Archiving forecasts was also not a commonly reported practice among forecast papers (Figure 7c). Three papers reported archiving of forecasts, either by publishing data and forecasts retroactively to a data repository upon publication of the associated paper (McClure et al., 2021) or by providing them in real time via an open online platform or repository (Baracchini et al., 2020; Carey et al., 2022). In two cases, authors reported that the forecast-related code was also published with a digital object identifier (DOI; Carey et al., 2022; McClure et al., 2021). We note that information on infrastructure and workflows may be difficult to extract from academic research papers as the focus is often on forecast results and performance rather than methodology. In addition, as noted above, operational forecast workflows developed by government agencies or private entities may not be published in academic journals, or the availability of these workflows may be limited by ethical considerations or security concerns (Hobday et al., 2019; Housh & Ohar, 2018).

3.3 | Human dimensions of forecasts

3.3.1 | Water quality forecasts are motivated by ecosystem services and increased variability

The development of many of the near-term freshwater quality forecasts we analyzed was motivated by the need for freshwater ecosystem services in the face of increased ecosystem variability due to global change. Researchers identified increased variability in management-relevant ecosystem variables such as water temperature (Carey et al., 2022; Thomas et al., 2020), distribution of freshwater fishes (Fraker et al., 2020), invasive species (Messenger & Olden, 2018), and algal biomass (Liu et al., 2020; Mu et al., 2021; Page et al., 2018) as motivation for forecast development. In all cases, the stated motivation for anticipating increased variability was

coupled with a desire to preemptively inform freshwater management and decision-making. Indeed, improving freshwater resource management was stated as motivation for forecast development in every freshwater quality forecast paper we analyzed (see Lofton et al., 2022a for complete list), save one (McClure et al., 2021). In addition to providing early warnings to resource managers and the public about global change, researchers mentioned improving forecasting methodology (Bhattacharyya & Sanyal, 2019; Peng et al., 2020) and understanding of ecological processes (McClure et al., 2021) as additional factors motivating forecast development.

3.3.2 | End-user engagement is not often reported in water quality forecast papers

Despite that nearly all freshwater quality forecast papers stated improved water resource management as motivation for forecast development, only six of 16 papers, representing four distinct forecast systems, named any forecast end users. While end-user engagement was infrequently reported in near-term water quality forecast papers, it is possible that forecast teams were engaging end users but not reporting it, especially if the focus of the paper was to document other aspects of the forecast system, such as model development or forecast performance.

The papers that did specify end users generated future predictions for a small, temperate drinking water reservoir (Falling Creek Reservoir, U.S.; Carey et al., 2022; Thomas et al., 2020), a large north temperate lake (Lake Geneva, Switzerland; Baracchini et al., 2020), two north temperate rivers (Miramichi and Nechako Rivers, Canada; Ouellet-Proulx, Chimi Chiadjeu, et al., 2017; Ouellet-Proulx, St-Hilaire, et al., 2017), and a Laurentian Great Lake (Lake Erie, U.S.; Liu et al., 2020). Incorporation of end users ranged from briefly mentioning that end users were associated with a particular forecast site or variable (Liu et al., 2020; Ouellet-Proulx, Chimi Chiadjeu, et al., 2017; Thomas et al., 2020) to detailing multiple mechanisms for engaging end users in forecast development (Carey et al., 2022). Carey et al. (2022) described co-developing a water quality forecast with drinking water reservoir managers in southwest Virginia, U.S., by (1) working with managers to identify useful target variables for forecasting, (2) observing water treatment plant operations to better understand managers' daily activities, and (3) requesting feedback on forecast visualizations to improve their use for decision-making. Ouellet-Proulx, St-Hilaire, et al. (2017) also provided a specific management motivation for their target variable of water temperature: helping lake managers in British Columbia, Canada plan summer water releases to reduce thermal stress for downstream freshwater fish.

While most papers focused on resource managers as potential end users or did not specify end user identity, one paper reported on how forecasts were used by multiple user groups. Baracchini et al. (2020) documented the use of their hydrodynamics and water temperature forecast system by various members of the community surrounding Lake Geneva, Switzerland using data collected from their forecast dissemination website. The authors were able to verify forecast use and acceptance by the community (evidenced by

~1000 visitors to their website per day in the summer of 2019) and to differentiate three types of end users: scientists, lake professionals, and the public.

4 | DISCUSSION AND SYNTHESIS: OPPORTUNITIES TO ADVANCE NEAR-TERM FRESHWATER QUALITY FORECASTING

Our findings indicate that most near-term water quality forecasts published as peer-reviewed articles in the past 5 years are in an early stage of development, serving as "proofs-of-concept" rather than as operational forecasts. These results set the stage for additional work to be done to advance water quality forecasting. Nonetheless, the papers we analyzed demonstrate key areas of recent progress that will be critical to future development of operational near-term freshwater quality forecasts, including: quantitative, probabilistic forecasts of both abiotic and biotic variables (e.g., Jin et al., 2019; Liu et al., 2020; Page et al., 2018; Peng et al., 2020), forecasts at management-relevant time horizons (e.g., Mercado-Bettín et al., 2021), use of probabilistic forecast assessment metrics (e.g., Ouellet-Proulx, Chimi Chiadjeu, et al., 2017; Ouellet-Proulx, St-Hilaire, et al., 2017), comparison of forecasts with null models (e.g., McClure et al., 2021; Page et al., 2018; Thomas et al., 2020), uncertainty propagation and partitioning (e.g., McClure et al., 2021; Thomas et al., 2020), iterative, automated workflows (e.g., Baracchini et al., 2020; Thomas et al., 2020), co-development of forecasts with end users (e.g., Carey et al., 2022), and assessment of forecast use by a range of end users (e.g., Baracchini et al., 2020). Further advances in near-term freshwater quality forecasting will require continued development of forecasting tools and skills as well as more substantive end-user engagement.

Here, we synthesize the results from the review to provide a list of seven recommendations comprising an agenda for developing the next generation of near-term freshwater quality forecasts, with an emphasis on building automated, operational forecast systems. The conceptual framework underpinning our recommendations to advance near-term freshwater quality forecasting is presented in [Figure 2](#).

4.1 | A definition of forecast that includes uncertainty

All forecasts are inherently uncertain as perfect knowledge of future events is impossible, and therefore a forecast should, by definition, specify uncertainty ([Figure 2](#): quantified uncertainty; uncertainty specification, propagation, and analysis). Ultimately, the degree of confidence end users place in a forecast depends on both the accuracy of the forecast (e.g., how well future predictions match observations) and the degree of forecast uncertainty. Underestimation or omission of uncertainty in future predictions can lead to overconfidence in forecast accuracy, potentially affecting management

decisions based on forecast output (Berthet et al., 2016). One compelling example of the risks associated with the omission of uncertainty from future predictions is the 1997 Red River flooding event in Grand Forks, ND, U.S., and East Grand Forks, MN, U.S., when the U.S. National Weather Service's future prediction of a 49 ft flood crest (with no quantitative uncertainty estimate associated with the flood crest height prediction) was incorrectly interpreted by decision-makers and community members as a maximum possible crest, leading to inundation and tremendous flood damage when the actual flood crest of 54.1 ft caused dikes protecting the cities to fail (Pielke, 1999).

In addition to improving decision-making outcomes, uncertainty quantification and partitioning can inform the most effective ways to improve forecast performance (e.g., Lofton, Brentrup, et al., 2022). For example, if uncertainty partitioning identifies that forecast model driver data is the biggest source of forecast uncertainty, then reducing uncertainty in driver data would be a logical next step for improving that forecast system (following Thomas et al., 2020). Importantly, reducing uncertainty in a forecast does not necessarily improve forecast accuracy if the forecast is biased (e.g., tends to over- or underestimate), and metrics that assess forecasts based on the degree of forecast uncertainty (e.g., sharpness; [Table S1](#)) are often predicated on the assumption that the forecast is sufficiently accurate (Gneiting, Balabdaoui, et al., 2005). Furthermore, even forecasts for which uncertainty is robustly characterized may not capture all possible future outcomes if an outcome occurs due to processes not included in the forecast model or has no historical analogue (Boettiger, 2022; NRC, 2010; Thompson & Smith, 2019). For example, a lake water quality model will likely fail to accurately predict future water quality if a new species that is not represented in the model invades the lake and alters water quality (e.g., an unexpected invasion of the spiny water flea, *Bythotrephes longimanus*; Walsh et al., 2016).

Despite the importance of incorporating uncertainty into future predictions, our review revealed that only 36% of papers predicting freshwater quality variables into the future specify uncertainty. Our findings highlight an opportunity for more robust specification and partitioning of uncertainty in freshwater forecasting efforts. Importantly, some freshwater forecasters are already successfully using sophisticated uncertainty specification techniques, evidenced by 7 of 12 near-term water quality forecasts and hindcasts which both propagate uncertainty and assimilate new observations to inform model initial conditions ([Figure 7b](#)).

Considering how a forecast or projection will be used for decision-making should guide methods for quantifying uncertainty in freshwater quality future predictions. For example, if a manager is presented with a projection that includes uncertainty by running a model with multiple scenarios (e.g., different levels of capture effort for an invasive crayfish within a stream network over the next 5 years), but a range of uncertainty *within* each scenario is not specified, that projection effectively is a deterministic future prediction with no uncertainty once a management decision is made.

4.2 | Integration of end users into the forecast process

Freshwater quality forecasts are developed by people, for people, and to date have been primarily intended for use by freshwater managers. It follows that the formation of forecaster-manager partnerships should be integral to forecast development and that managers and other end users should be engaged throughout the forecast process (Figure 2: end-user engagement). For example, during the early stages of forecast system development, end users can identify which target forecast variables are most useful (e.g., asking ship captains whether forecasts of lake ice concentration or ice thickness are more useful; Fujisaki-Manome et al., 2022), and over which time horizons forecasts should be provided (DeFlorio et al., 2021; Turner et al., 2020). During model development, expert elicitation, a formal process of extracting expert knowledge while mitigating bias (Hemming et al., 2018), can be used to inform model structure (e.g., Bertone et al., 2016). End users should also be consulted regarding forecast dissemination methods to ensure correct interpretation of forecast output and maximize forecast utility (Berthet et al., 2016; Gerst et al., 2020; Theocharis et al., 2019). For example, interviews and focus groups with end users of NOAA's Climate Prediction Center climate outlook visualizations guided updates of NOAA's air temperature and precipitation color maps for improved forecast interpretability (Gerst et al., 2020). Finally, feedback from managers and end users should be sought after forecast dissemination to determine if the forecast product is being successfully implemented for decision-making support (e.g., Jackson-Blake et al., 2022).

Of the 16 near-term freshwater quality forecasting papers analyzed, two emphasized end-user engagement, specifically co-development of forecasts with resource managers (Carey et al., 2022) and assessment of forecast acceptance and use (Baracchini et al., 2020). These examples illustrate the potential for co-development of additional operational freshwater quality forecasts suitable for management decision-making in the near future. As end-user engagement represents a critical component of forecast system development, we encourage researchers to document it, even if briefly, in their academic papers.

4.3 | More forecasts using diverse modeling approaches over multiple horizons

Advances in freshwater quality forecasting require the existence of initial forecast systems upon which to improve, serving as precursors for operational near-term water quality forecast systems (Figure 2: operational, near-term water quality forecasts). The dominance of water *quantity* freshwater predictions (83% of freshwater future prediction papers) over water *quality* future predictions in our literature review underscores the critical need for developing additional near-term freshwater quality forecasts, ideally using diverse modeling approaches over multiple forecast horizons. The wide

diversity of water quality forecast target variables in our review (Figure 5) highlights that for any individual target variable, relatively few forecasts are being produced, limiting intercomparison of forecasting approaches.

Forecasts of a single target variable using multiple modeling techniques at many sites (e.g., Sadler et al., 2022) are needed to produce actionable forecasts and provide insight on freshwater ecosystem function. Using a wide diversity of modeling approaches is necessary to avoid the "forecast trap" (sensu Boettiger, 2022), wherein the most accurate available forecast does not lead to an optimal management outcome. The trap arises when the range of possible outcomes predicted by an ensemble of models is too narrow, providing managers with insufficient guidance about how their decisions might manifest in the real world (Boettiger, 2022; Thompson & Smith, 2019). Moreover, forecast end users typically integrate multiple forms of information when making decisions (e.g., Fujisaki-Manome et al., 2022). As a result, development of a diversity of both quantitative (e.g., tomorrow's dissolved oxygen will be $1.8 \pm 0.5 \text{ mg L}^{-1}$) and categorical (e.g., the risk of observing hypoxia tomorrow will be *high*) forecasts that incorporate model output and human expertise (Tetlock & Gardner, 2016) will likely be needed to support a variety of forecast end users in achieving optimal management outcomes. Importantly, forecasters should also consider both simple and complex model structures, as simple models may prove the most effective for forecasting certain variables, such as vertebrate population size forecasts (Ward et al., 2014), whereas complex process-based models may be better at forecasting conditions that fall outside of the range of historical conditions (Adler et al., 2020). Moreover, consideration of internal waterbody processes affecting water quality (e.g., biochemical oxygen demand) and watershed processes (e.g., stream nutrient loading), in addition to meteorological drivers, will likely be important for advancing freshwater quality forecast performance. However, comparison of more complex models against simple models (i.e., null or naïve models) is necessary to quantify the benefit of added model complexity (e.g., Perretti et al., 2013).

In addition to using diverse modeling approaches, production of forecasts at multiple time horizons is needed to ensure maximum forecast utility for end users. Near-term forecasts comprise a wide range of time scales (e.g., daily, weekly, seasonal, decadal), each of which is likely associated with different end-user goals and decisions. For example, a ship captain may be most interested in lake ice conditions over the next several hours to days when deciding whether to embark (Fujisaki-Manome et al., 2022), while a reservoir manager may look multiple months ahead when planning water releases downstream (Jackson-Blake et al., 2022; Turner et al., 2020). We observed a relative dearth of near-term freshwater quality forecasts at multi-month (seasonal) time scales (but see Mercado-Bettín et al., 2021; Figure 6), highlighting an opportunity for the development of additional forecasts at this horizon. Furthermore, assessment of forecasts across multiple horizons may lead to insights regarding the intrinsic predictability of freshwater ecosystems (sensu Pennekamp et al., 2019), in

turn informing which modeling approaches are likely to be most successful for freshwater forecasting (Pennekamp et al., 2019; Petchey et al., 2015).

The development of forecasts of a single target variable at many sites with different environmental conditions can also provide insight on the intrinsic predictability of water quality and the utility of forecasting for water quality management across ecosystems. Initiatives such as the National Ecological Observatory Network (NEON) Ecological Forecasting Challenge (Thomas, Boettiger, et al., 2022), which solicits participants to submit forecasts for multiple sites using standardized data collected by NEON and assesses their skill, are a starting point to compare predictability across ecosystems and model types (e.g., Thomas, McClure, et al., 2022). However, the freshwater component of the NEON Challenge is limited to seven lakes and 27 streams occurring in the United States, and therefore lacks a suitably wide range of environmental conditions to be globally relevant. Moreover, forecasts are evaluated for accuracy only, not for optimal management outcomes. Additional efforts to develop multi-site forecasts are needed to assess freshwater ecosystem predictability under global change as well as ensure maximum forecast utility for water quality management.

4.4 | Shared standards for workflows, file formats, metadata, archiving, and benchmarking

Building better models is not sufficient to improve near-term freshwater quality forecast performance and utility. Development of automated, portable, and reproducible workflows (e.g., Huang et al., 2019; White et al., 2019), standardized metadata and file formats (e.g., Dietze et al., 2021), repositories for archiving forecasts (e.g., Reich et al., 2021), and consensus on methods for benchmarking forecast skill (Dietze et al., 2018; Smith et al., 2015) are also needed (Figure 2: automated, iterative workflows, archiving and metadata, forecast assessment).

Portable, reproducible workflows permit replication of results whenever and wherever the workflow is run (e.g., avoiding the problem of obtaining a different result if a user's software has been updated or across different operating systems) and are easily accessed by users (Vaillancourt et al., 2020). Examples of tools that facilitate the development of portable, reproducible forecast workflows include software containers, which can package, for example, forecasting code with all of the necessary dependencies and computing environment specifications into self-contained units for reproducible analyses (Cito et al., 2017) and cloud computing, which allows users to access, for example, forecast output from any device at a location and time of their choice, rather than requiring each user to have specialized infrastructure for running a forecast on a local computer (Sunyaev, 2020). The landscape of constantly evolving computing technologies available for use in water quality forecast workflows highlights the importance of (1) engaging interdisciplinary expertise in forecast development teams, including computer science (Carey et al., 2019, 2022) and (2) developing accessible,

community-based cyberinfrastructure tools and software (Boettiger et al., 2015; Fer et al., 2021).

Standardized file formats and data structures for observational data, forecast output, and metadata (e.g., Dietze et al., 2021) facilitate the use of shared tools for automated assimilation of data into forecast models (e.g., Huang et al., 2019; White et al., 2019), regular dissemination of forecasts to end users (e.g., Baracchini et al., 2020; Daneshmand et al., 2021), and forecast evaluation for quantitative intercomparison (e.g., Thomas, Boettiger, et al., 2022). Adoption of standardized data formats and metadata by freshwater research networks such as the Global Lake Ecological Observatory Network (GLEON; Weathers et al., 2013) could facilitate freshwater quality forecasting by providing databases with which multiple forecasting approaches could be tested at the global scale. While some initiatives have begun this work (e.g., Jennings et al., 2017), additional efforts to produce intercomparable forecasts using shared standards are needed to advance freshwater quality forecasting.

Once file formats have been developed, archiving forecasts in real time promotes integrity in forecast benchmarking. However, the iterative nature of real-time forecast products raises several pertinent archiving challenges, including the development of repositories that permit automated, iterative updating of forecast output as additional forecasts are produced; deciding how to publish real-time forecasts in peer-reviewed papers that require revising the forecasts months to years after being initially generated; and determining whether and how to assign DOIs to data products that will change or be updated every time a new forecast is issued. Recent efforts to develop a discipline-agnostic archive specifically designed for predictive products, with standardized data and metadata formats, scoring, and visualizations (Reich et al., 2021), illustrate that early integration of archiving into freshwater quality forecasting efforts could have long-term benefits for promoting forecast intercomparison.

In addition to formalizing community standards for data, forecast outputs, and archiving, freshwater forecasters need to build consensus on how to assess forecast performance (Pappenberger et al., 2015). The properties of candidate benchmark assessment metrics should be carefully considered to ensure that the desired attributes of freshwater quality forecasts (e.g., high accuracy) are adequately rewarded and undesirable attributes (e.g., large uncertainty spread) are penalized. For example, sharpness penalizes forecasts with a large uncertainty spread but does not assess the distance of a forecast prediction from the observation (Gneiting, Balabdaoui, et al., 2005; Table S1), while the ignorance score heavily penalizes forecasts that fall far from observations (Roulston & Smith, 2002).

Fortunately, freshwater quality forecasters are starting to adopt methods of forecast assessment that facilitate benchmarking and intercomparison of probabilistic forecasts. For example, adoption of a probabilistic forecast assessment metric (CRPS) by multiple water temperature forecasters enabled us to compare forecast performance for two forecasting systems in a reservoir and two rivers, respectively (Ouellet-Proulx, Chimi Chiadjeu, et al., 2017; Ouellet-Proulx, St-Hilaire, et al., 2017; Thomas et al., 2020). Based on the performance of these two forecasts, future forecasts of surface water

temperature up to 16 days ahead could be benchmarked against a CRPS of $\sim 1^\circ\text{C}$, the maximum CRPS observed in these studies. But overall, the wide variety of assessment metrics currently used to quantify water quality forecast performance (Figure 7a) makes intercomparison of forecasts difficult. Efforts to reach a consensus on appropriate methods for benchmarking other important water quality variables (e.g., dissolved oxygen, chlorophyll-a) are needed to measure improvements in near-term freshwater quality forecast performance over time.

4.5 | Integration of insights from other forecasting disciplines

Near-term freshwater quality forecasting will benefit by integrating and adapting tools and skills from more mature environmental forecasting disciplines, particularly weather, marine, and water quantity forecasting (Figure 2: tools and skills). Arguably the largest and most mature Earth system forecasting discipline, weather and climate forecasting offer methodological inspiration and guidance to water quality forecasters on a number of fronts, including data assimilation (reviewed in Lahoz & Schneider, 2014), uncertainty quantification (e.g., Yip et al., 2011), and forecast assessment (e.g., Gneiting, Raftery, et al., 2005; Hersbach, 2000). For example, the CRPS probabilistic forecast metric, which was used in four of 16 near-term water quality forecasts identified in our review, has been used in weather forecasting for decades (Gneiting, Raftery, et al., 2005; Hersbach, 2000). In addition, examining the benefits and disadvantages of the numerous methods for public dissemination of weather forecasts, ranging from mobile phone applications (Zabini, 2016) to televised verbal interpretation by local, human forecasters (Compton, 2018), may be helpful for water quality forecasting teams to consider as they work to provide forecast output that meets end-user needs. Finally, the history of weather forecasting demonstrates that improvement in forecast skill over time is possible even if initial attempts are quite poor (Bauer et al., 2015; Blum, 2019), providing motivation to aspiring freshwater quality forecasters to begin forecasting now, even in the face of incomplete knowledge (Dietze et al., 2018).

Freshwater quality forecasters can also apply lessons learned from marine and water quantity forecasters regarding, for example, model development (Varadharajan et al., 2022), forecast dissemination (Choi et al., 2022), and the ethical implications of providing operational forecasts (Hobday et al., 2019; Record & Pershing, 2021). Moreover, insights from marine and freshwater quantity forecasting may be particularly relevant to freshwater quality forecasting as all three disciplines involve aquatic ecosystems. For example, researchers are now applying machine learning methods long popular in freshwater quantity forecasting to water quality forecasting (reviewed by Poh Wai et al., 2022), and several challenges informed by the use of machine learning models in water quantity have been identified, including the need for knowledge-guided machine learning, incorporation of uncertainty, transfer learning (i.e., models trained at data-rich sites are then applied at data-poor sites), and improved

interpretability of model output (Khudhair et al., 2022; Poh Wai et al., 2022; Varadharajan et al., 2022). As another example, many of the lessons learned in the development and dissemination of predictive water quality guidance at marine beaches may readily transfer to freshwater beaches, such as the utility of three-dimensional models for capturing diurnal fluctuations in water quality (Choi et al., 2022), methods for coordinating data collection among multiple agencies to assess urban water quality (Aznar et al., 2022), or the difficulty of developing adequate water quality predictive tools (e.g., *Escherichia coli* predictions) for beaches subject to frequent visits by large flocks of birds (U.S. EPA, 2016). Finally, ethical considerations relevant to operational marine forecasts, such as the risk of driving lobster prices up or down based on lobster landing forecasts (Hobday et al., 2019), may have freshwater analogues, such as economic risks associated with providing freshwater fishery forecasts.

Forecasting techniques and ideas gleaned from other disciplines will likely require adaptation to account for unique attributes of water quality data and freshwater ecosystem processes before being applied in a freshwater quality forecasting context. For example, lake freshwater quality forecast models may need to account for watershed inputs that are integrated into lake water quality, particularly over seasonal or annual time scales. However, recent innovations in freshwater quality forecasting methodology, including embedding freshwater-relevant physical processes into machine learning model architectures (Daw et al., 2020; Read et al., 2019) and data assimilation of multiple freshwater quality data streams with different attributes (Abdul Wahid & Arunbabu, 2022; Chen et al., 2021; Cho et al., 2020; Cobo et al., 2022), illustrate the benefits of adopting practices from other disciplines for water quality forecasting.

4.6 | Financial support for near-term water quality forecasting

Most of the near-term freshwater quality forecasts that we analyzed are still in the early stages of development, indicating that funding to support the collection of data, development of automated, iterative workflows, advancement of modeling and uncertainty analysis methods, robust forecast archiving, and assessment of forecast performance and utility to managers are needed (Figure 2: funding support). Some freshwater quality forecasting efforts could leverage existing data collection programs run by agencies and sensor networks (e.g., NEON, U.S. Geological Survey); however, to date, there has been much more standardized sensor infrastructure investment in water quantity monitoring than quality monitoring.

Unprecedented efforts in freshwater future prediction are underway, requiring broad investments that span regional/state and national agencies as well as academic research portfolios. Freshwater quality forecasting can and should be explicitly identified as a priority to support essential agency mandates, for example, in the context of supporting fisheries, water quality, the Blue Economy (e.g., Petrea et al., 2021) or preventing waterborne disease outbreaks (e.g., Nusrat et al., 2022). Funding opportunities for academic

researchers that explicitly encourage the cross-disciplinary collaboration required to build automated, operational forecasting systems with end-user engagement will be most helpful in facilitating the development of robust water quality forecast systems. Importantly, indefinitely maintaining an operational forecast system is outside the scope of most academic research programs, as it requires infrastructure maintenance and investment in personnel extending beyond the timespan of most academic research grants (Carey et al., 2022; Hobday et al., 2019). As a result, additional funding will be required to facilitate the transition of operational forecast systems from academic teams to industry and government agencies.

4.7 | Further development of educational resources and communities of practice

Ultimately, generating accurate freshwater quality forecasts requires extensive training of the forecasting team. Obtaining training in a multi-disciplinary, emerging field like ecological forecasting can be challenging (Woelmer et al., 2021), motivating the need for broad sharing of educational materials (Moore et al., 2022; Willson, 2022) and open-source tools and software (e.g., Boettiger et al., 2015; Daneshmand et al., 2021; Hipsey et al., 2019; Moore et al., 2021) within active communities of practice (Figure 2: educational resources; communities of practice). Communities of practice may occur within government agencies, originate from a specific project such as the Hydrological Ensemble Prediction EXperiment (HEPEX; Schaake et al., 2007), take the form of grassroots networks such as the Ecological Forecasting Initiative (EFI; Dietze & Lynch, 2019), exist as formal professional societies, or be housed at academic institutions.

To help train new forecasters, forecasting communities of practice should help create and facilitate sharing of resources, such as teaching modules focused on fundamental forecasting concepts (Moore et al., 2022), curated lists of freely available forecasting educational resources (Willson, 2022), and community-based development of software (Boettiger et al., 2015). In addition, education in freshwater quality forecasting would be enhanced by introducing forecasting (and uncertainty) at earlier educational stages (e.g., in K-12 education; Rosenberg et al., 2022) and development of formal curricula in freshwater forecasting specifically (Moore et al., 2022).

5 | CONCLUSIONS

Near-term freshwater quality forecasts are urgently needed as freshwater ecosystems are experiencing increasing variability on near-term time scales due to global change, causing substantial risk to human safety, environmental health, and ecosystem services. Water quality forecasting is primed to make considerable advances over the next decade, as evidenced by a wide diversity of potential applications and recent progress in forecasting methodology. Continued progress requires the development of more forecasts: to robustly measure gains in forecast performance, we must be able to compare forecasts of the

same variables across a wide diversity of sites, modeling approaches, and forecast horizons. Such a multi-faceted forecasting effort will require the concomitant development of community standards regarding forecast metadata, file formats, archiving, and benchmarking to permit forecast intercomparison. As we develop freshwater quality forecasts, we should avail ourselves of lessons learned in other forecasting disciplines, whether it be innovative methods of incorporating uncertainty into machine learning models adapted from water quantity forecasting or taking inspiration from the continuous improvement in weather forecast performance made over decades. Finally, we must remember that operational freshwater quality forecasts are developed by people, for people, and thus require both comprehensive training opportunities for forecasters and meaningful end-user interaction throughout the forecast process. Given the promise of freshwater forecasting for improving management in the face of increased variability and risk due to global change, we urge freshwater scientists to engage with end users, assemble interdisciplinary teams, and get started on building operational near-term water quality forecasts.

AUTHOR CONTRIBUTIONS

Conceptualization: Cayelan C. Carey, R. Quinn Thomas; Data curation: Mary E. Lofton, Dexter W. Howard; Formal analysis: Mary E. Lofton, Dexter W. Howard; Funding acquisition: Cayelan C. Carey, R. Quinn Thomas; Methodology: Mary E. Lofton, Cayelan C. Carey, R. Quinn Thomas; Project administration: Mary E. Lofton; Visualization: Mary E. Lofton; Writing—original draft: Mary E. Lofton; Writing—review & editing: Mary E. Lofton, Cayelan C. Carey, R. Quinn Thomas, Dexter W. Howard.

ACKNOWLEDGMENTS

The authors would like to thank NSF funding (DEB-1926050, DBI-1933016, DEB-1926388, DEB-1753639); artists at the Noun Project for icons embedded in Figures 1 and 2; and Tadhg Moore, the FLARE research team, and members of the EFI RCN and Carey and Thomas Labs at Virginia Tech for helpful discussions and feedback.

CONFLICT OF INTEREST

The authors declare no competing interests.

DATA AVAILABILITY STATEMENT

The data that support the findings of this study are openly available in the Environmental Data Initiative repository at <https://doi.org/10.6073/pasta/949164a64de132ff3bbb7b92d2e1c729> and are cited in the text as (Lofton et al., 2022b). The code used to analyze data and produce figures is openly available in Zenodo at <https://doi.org/10.5281/zenodo.7508042> and is cited in the text (Lofton et al., 2022a).

ORCID

Mary E. Lofton  <https://orcid.org/0000-0003-3270-1330>
 Dexter W. Howard  <https://orcid.org/0000-0002-6118-2149>
 R. Quinn Thomas  <https://orcid.org/0000-0003-1282-7825>
 Cayelan C. Carey  <https://orcid.org/0000-0001-8835-4476>

REFERENCES

- Abdul Wahid, A., & Arunbabu, E. (2022). Forecasting water quality using seasonal ARIMA model by integrating in-situ measurements and remote sensing techniques in Krishnagiri reservoir, India. *Water Practice & Technology*, 17(5), 1230–1252.
- Adler, P. B., White, E. P., & Cortez, M. H. (2020). Matching the forecast horizon with the relevant spatial and temporal processes and data sources. *Ecography*, 43, 1729–1739.
- Albert, J. S., Destouni, G., Duke-Sylvester, S. M., Magurran, A. E., Oberdorff, T., Reis, R. E., Winemiller, K. O., & Ripple, W. J. (2021). Scientists' warning to humanity on the freshwater biodiversity crisis. *Ambio*, 50(1), 85–94.
- Ayzel, G. (2021). OpenForecast v2: Development and benchmarking of the first national-scale operational runoff forecasting system in Russia. *Hydrology*, 8(1), 3.
- Aznar, B., Grima, J., Torret, X., Medina, V., Varela, J., Chesa, M. J., Llopart-Mascaró, A., Garcia, J. A., Erill, D., Batlle, M., Juan, T., Bosch, C., & Corchero, A. (2022). Applying real-time advanced urban management to ensure bathing water quality in Barcelona. In M. Ortega-Sánchez (Ed.) *Proceedings of the 39th IAHR world congress*. International Association for Hydro-Environment Engineering and Research.
- Baracchini, T., Wüest, A., & Bouffard, D. (2020). Meteolakes: An operational online three-dimensional forecasting platform for lake hydrodynamics. *Water Research*, 172, 115529.
- Bauer, P., Thorpe, A., & Brunet, G. (2015). The quiet revolution of numerical weather prediction. *Nature*, 525(7567), 47–55.
- Berthet, L., Piotte, O., Gaume, É., Marty, R., & Ardilouze, C. (2016). Operational forecast uncertainty assessment for better information to stakeholders and crisis managers. *E3S Web of Conferences*, 7, 18005. <https://doi.org/10.1051/e3sconf/20160718005>
- Bertone, E., Sahin, O., Richards, R., & Roiko, A. (2016). Extreme events, water quality and health: A participatory Bayesian risk assessment tool for managers of reservoirs. *Journal of Cleaner Production*, 135, 657–667.
- Bhattacharyya, S., & Sanyal, J. (2019). Impact of different types of meteorological data inputs on predicted hydrological and erosive responses to projected land use changes. *Journal of Earth System Science*, 128(3), 60.
- Blum, A. (2019). *The weather machine: A journey inside the forecast*. HarperCollins.
- Boettiger, C. (2022). The forecast trap. *Ecology Letters*, 25(7), 1655–1664.
- Boettiger, C., Chamberlain, S., Hart, E., & Ram, K. (2015). Building software, building community: Lessons from the rOpenSci project. *Journal of Open Research Software*, 3, e8.
- Bourgeaux, J., Teichert, N., Gillier, J.-M., Danet, V., Feunteun, E., Acou, A., Charrier, F., Mazel, V., Carpentier, A., & Trancart, T. (2022). Modelling past migrations to determine efficient management rules favouring silver eel escapement from a large regulated floodplain Lake. *Journal for Nature Conservation*, 67, 126192.
- Bradford, J. B., Betancourt, J. L., Butterfield, B. J., Munson, S. M., & Wood, T. E. (2018). Anticipatory natural resource science and management for a changing future. *Frontiers in Ecology and the Environment*, 16(5), 295–303.
- Bradford, J. B., Weltzin, J., McCormick, M. L., Baron, J., Bowen, Z., Bristol, S., Carlisle, D., Crimmins, T., Cross, P., DeVivo, J., & Dietze, M. (2020). *Ecological forecasting—21st century science for 21st century management*. U.S. Geological Survey. Open-File Report 2020–1073. <https://doi.org/10.3133/ofr20201073>
- Bröcker, J., & Smith, L. A. (2007). Increasing the reliability of reliability diagrams. *Weather and Forecasting*, 22(3), 651–661.
- Carey, C. C., Ward, N. K., Farrell, K. J., Lofton, M. E., Krinos, A. I., McClure, R. P., Subratie, K. C., Figueiredo, R. J., Doubek, J. P., Hanson, P. C., Papadopoulos, P., & Arzberger, P. (2019). Enhancing collaboration between ecologists and computer scientists: Lessons learned and recommendations forward. *Ecosphere*, 10(5), e02753.
- Carey, C. C., Woelmer, W. M., Lofton, M. E., Figueiredo, R. J., Bookout, B. J., Corrigan, R. S., Daneshmand, V., Hounshell, A. G., Howard, D. W., Lewis, A. S. L., McClure, R. P., Wander, H. L., Ward, N. K., & Thomas, R. Q. (2022). Advancing lake and reservoir water quality management with near-term, iterative ecological forecasting. *Inland Waters*, 12(1), 107–120.
- Chen, C., Chen, Q., Li, G., He, M., Dong, J., Yan, H., Wang, Z., & Duan, Z. (2021). A novel multi-source data fusion method based on Bayesian inference for accurate estimation of chlorophyll-a concentration over eutrophic lakes. *Environmental Modelling & Software*, 141, 105057.
- Chen, Y., Feng, Y., Zhang, F., Yang, F., & Wang, L. (2020). Assessing and predicting the water resources vulnerability under various climate-change scenarios: A case study of Huang-Huai-Hai River basin, China. *Entropy*, 22, 3.
- Cho, K. H., Pachepsky, Y., Ligaray, M., Kwon, Y., & Kim, K. H. (2020). Data assimilation in surface water quality modeling: A review. *Water Research*, 186, 116307.
- Choi, K. W., Chan, S. N., & Lee, J. H. W. (2022). The WATERMAN system for daily beach water quality forecasting: A ten-year retrospective. *Environmental Fluid Mechanics*. <https://doi.org/10.1007/s10652-022-09839-4>
- Cito, J., Schermann, G., Wittern, J. E., Leitner, P., Zumberi, S., & Gall, H. C. (2017). An empirical analysis of the docker container ecosystem on GitHub. In *2017 IEEE/ACM 14th International Conference on Mining Software Repositories (MSR)* (pp. 323–333). IEEE. <https://doi.org/10.1109/MSR.2017.67>
- Cobo, F., Vieira-Lanero, R., Barca, S., Cobo, M. d. C., Quesada, A., Nasr, A., Bedri, Z., Álvarez-Cid, M. X., Saberioon, M., Brom, J., & Espiña, B. (2022). The AIHABs project: Towards an artificial intelligence-powered forecast for harmful algal blooms. *Biology and Life Sciences Forum*, 14(1), 13.
- Compton, J. (2018). When weather forecasters are wrong: Image repair and public rhetoric after severe weather. *Science Communication*, 40(6), 778–788.
- Coreau, A., Pinay, G., Thompson, J. D., Cheptou, P.-O., & Mermet, L. (2009). The rise of research on futures in ecology: Rebalancing scenarios and predictions. *Ecology Letters*, 12(12), 1277–1286.
- Daneshmand, V., Breef-Pilz, A., Carey, C. C., Jin, Y., Ku, Y.-J., Subratie, K. C., Thomas, R. Q., & Figueiredo, R. J. (2021). Edge-to-cloud virtualized cyberinfrastructure for near real-time water quality forecasting in lakes and reservoirs. In *2021 IEEE 17th International Conference on eScience (eScience)*. <https://doi.org/10.1109/escience51609.2021.00024>
- Davenport, F. V., Burke, M., & Diffenbaugh, N. S. (2021). Contribution of historical precipitation change to US flood damages. *Proceedings of the National Academy of Sciences of the United States of America*, 118(4), e2017524118.
- Daw, A., Thomas, R. Q., Carey, C. C., Read, J. S., Appling, A. P., & Karpatne, A. (2020). Physics-guided architecture (PGA) of neural networks for quantifying uncertainty in lake temperature modeling. In *Proceedings of the 2020 SIAM international conference on data mining (SDM)* (pp. 532–540). Society for Industrial and Applied Mathematics. <https://doi.org/10.1137/1.9781611976236.60>
- DeFlorio, M., Ralph, F., Waliser, D., Jones, J., & Anderson, M. (2021). Better seasonal-to-seasonal forecasts for water management. *Eos*, 102. <https://doi.org/10.1029/2021eo159749>
- Dietze, M. (2017). *Ecological Forecasting*. Princeton University Press.
- Dietze, M., Fox, A., Beck-Johnson, L. M., Betancourt, J. L., Hooten, M. B., Jarnevich, C. S., Keitt, T. H., Kenney, M. A., Laney, C. M., Larsen, L. G., Loeschner, H. W., Lunch, C. K., Pijanowski, B. C., Randerson, J. T., Read, E. K., Tredennick, A. T., Vargas, R., Weathers, K. C., & White, E. P. (2018). Iterative near-term ecological forecasting: Needs, opportunities, and challenges. *Proceedings of the National Academy of Sciences of the United States of America*, 115(7), 1424–1432.

- Dietze, M., & Lynch, H. (2019). Forecasting a bright future for ecology. *Frontiers in Ecology and the Environment*, 17(1), 3.
- Dietze, M., Thomas, R. Q., Peters, J., & Boettiger, C. (2021). A community convention for ecological forecasting: Output files and metadata. *EcoEvoRxiv*. <https://doi.org/10.32942/osf.io/9dgtq>
- Emerton, R., Zsoter, E., Arnal, L., Cloke, H. L., Muraro, D., Prudhomme, C., Stephens, E. M., Salamon, P., & Pappenberger, F. (2018). Developing a global operational seasonal hydro-meteorological forecasting system: GloFAS-seasonal v1.0. *Geoscientific Model Development*, 11(8), 3327–3346.
- Evensen, G. (2003). The Ensemble Kalman Filter: Theoretical formulation and practical implementation. *Ocean Dynamics*, 53(4), 343–367.
- Fer, I., Gardella, A. K., Shiklomanov, A. N., Campbell, E. E., Cowdery, E. M., De Kauwe, M. G., Desai, A., Duvencek, M. J., Fisher, J. B., Haynes, K. D., Hoffman, F. M., Johnston, M. R., Kooper, R., LeBauer, D. S., Mantooth, J., Parton, W. J., Poulter, B., Quaife, T., Raiho, A., ... Dietze, M. C. (2021). Beyond ecosystem modeling: A roadmap to community cyberinfrastructure for ecological data-model integration. *Global Change Biology*, 27(1), 13–26.
- Field, C. B., Barros, V. R., Dokken, D. J., Mach, K. J., Mastrandrea, M. D., Bilir, T. E., Chatterjee, M., Ebi, K. L., Estrada, Y. O., Genova, R. C., Girma, B., Kissel, E. S., Levy, A. N., MacCracken, S., Mastrandrea, P. R., & White, L. L. (2014). Freshwater resources. In C. B. Field, V. R. Barros, D. J. Dokken, K. J. Mach, M. D. Mastrandrea, T. E. Bilir, M. Chatterjee, K. L. Ebi, Y. O. Estrada, R. C. Genova, B. Girma, E. S. Kissel, A. N. Levy, S. MacCracken, P. R. Mastrandrea, & L. L. White (Eds.), *Climate change 2014: Impacts, adaptation and vulnerability. Part a: Global and sectoral aspects. Contribution of working group II to the fifth assessment report of the intergovernmental panel on climate change* (pp. 229–269). Cambridge University Press.
- Fraker, M. E., Keitzer, S. C., Sinclair, J. S., Aloysius, N. R., Dippold, D. A., Yen, H., Arnold, J. G., Daggupati, P., Johnson, M.-V. V., Martin, J. F., Robertson, D. M., Sowa, S. P., White, M. J., & Ludsins, S. A. (2020). Projecting the effects of agricultural conservation practices on stream fish communities in a changing climate. *The Science of the Total Environment*, 747, 141112.
- Fry, L. M., Apps, D., & Gronewold, A. D. (2020). Operational seasonal water supply and water level forecasting for the Laurentian great lakes. *Journal of Water Resources Planning and Management*, 146(9), 04020072.
- Fujisaki-Manome, A., Gill, D., Channell, K., Graves, V., Jagannathan, K. A., Anderson, E. J., & Lemos, M. C. (2022). *Scaling-up stakeholder engagement efforts to inform better communication & uptake of NOAA Great Lakes ice forecast information*. University of Michigan Report. <https://doi.org/10.7302/4389>
- Gerst, M. D., Kenney, M. A., Baer, A. E., Speciale, A., Felix Wolfinger, J., Gottschalk, J., Handel, S., Rosencrans, M., & Dewitt, D. (2020). Using visualization science to improve expert and public understanding of probabilistic temperature and precipitation outlooks. *Weather, Climate, and Society*, 12(1), 117–133.
- Gilarranz, L. J., Narwani, A., Odermatt, D., Siber, R., & Dakos, V. (2022). Regime shifts, trends, and variability of lake productivity at a global scale. *Proceedings of the National Academy of Sciences*, 119(35), e2116413119.
- Giuliani, M., Crochemore, L., Pechlivanidis, I., & Castelletti, A. (2020). From skill to value: Isolating the influence of end user behavior on seasonal forecast assessment. *Hydrology and Earth System Sciences*, 24(12), 5891–5902.
- Gneiting, T., Balabdaoui, F., & Raftery, A. E. (2005). Probabilistic forecasts, calibration and sharpness. *Journal of the Royal Statistical Society B*, 69, 243–268.
- Gneiting, T., Raftery, A. E., Westveld, A. H., & Goldman, T. (2005). Calibrated probabilistic forecasting using ensemble model output statistics and minimum CRPS estimation. *Monthly Weather Review*, 133(5), 1098–1118.
- Grant, M. J., & Booth, A. (2009). A typology of reviews: An analysis of 14 review types and associated methodologies. *Health Information and Libraries Journal*, 26(2), 91–108.
- Gunn, M. A., Matherne, A. M., & Mason, R. R. (2014). *The USGS at Embudo, New Mexico: 125 years of systematic streamgaging in the United States (No. 2014-3034; fact sheet)*. U.S. Geological Survey. <https://doi.org/10.3133/fs20143034>
- Han, S., & Coulibaly, P. (2017). Bayesian flood forecasting methods: A review. *Journal of Hydrology*, 551, 340–351.
- Harris, D. J., Taylor, S. D., & White, E. P. (2018). Forecasting biodiversity in breeding birds using best practices. *PeerJ*, 6, e4278.
- Heilman, K. A., Dietze, M. C., Arizpe, A. A., Aragon, J., Gray, A., Shaw, J. D., Finley, A. O., Klesse, S., DeRose, R. J., & Evans, M. E. K. (2022). Ecological forecasting of tree growth: Regional fusion of tree-ring and forest inventory data to quantify drivers and characterize uncertainty. *Global Change Biology*, 28(7), 2442–2460.
- Hemming, V., Burgman, M. A., Hanea, A. M., McBride, M. F., & Wintle, B. C. (2018). A practical guide to structured expert elicitation using the IDEA protocol. *Methods in Ecology and Evolution*, 9(1), 169–180.
- Hersbach, H. (2000). Decomposition of the continuous ranked probability score for ensemble prediction systems. *Weather and Forecasting*, 15(5), 559–570.
- Hestir, E. L., Brando, V. E., Bresciani, M., Giardino, C., Matta, E., Villa, P., & Dekker, A. G. (2015). Measuring freshwater aquatic ecosystems: The need for a hyperspectral global mapping satellite mission. *Remote Sensing of Environment*, 167, 181–195.
- Hipsey, M. R., Bruce, L. C., Boon, C., Busch, B., Carey, C. C., Hamilton, D. P., Hanson, P. C., Read, J. S., de Sousa, E., Weber, M., & Winslow, L. A. (2019). A General Lake model (GLM 3.0) for linking with high-frequency sensor data from the global Lake ecological observatory network (GLEON). *Geoscientific Model Development*, 12(1), 473–523.
- Ho, J. C., Michalak, A. M., & Pahlevan, N. (2019). Widespread global increase in intense lake phytoplankton blooms since the 1980s. *Nature*, 574(7780), 667–670.
- Hobday, A. J., Hartog, J. R., Manderson, J. P., Mills, K. E., Oliver, M. J., Pershing, A. J., & Siedlecki, S. (2019). Ethical considerations and unanticipated consequences associated with ecological forecasting for marine resources. *ICES Journal of Marine Science*, 76(5), 1244–1256.
- Housh, M., & Ohar, Z. (2018). Model-based approach for cyber-physical attack detection in water distribution systems. *Water Research*, 139, 132–143.
- Huang, Y., Stacy, M., Jiang, J., Sundi, N., Ma, S., Saruta, V., Jung, C. G., Shi, Z., Xia, J., Hanson, P. J., Ricciuto, D., & Luo, Y. (2019). Realized ecological forecast through an interactive ecological platform for assimilating data (EcoPAD, v1.0) into models. *Geoscientific Model Development*, 12(3), 1119–1137.
- Jackson-Blake, L. A., Clay, F., de Eyto, E., French, A. S., Frías, M. D., Mercado-Bettin, D., Moore, T., Puértolas, L., Poole, R., Rinke, K., Shikhani, M., van der Linden, L., & Marcé, R. (2022). Opportunities for seasonal forecasting to support water management outside the tropics. *Hydrology and Earth System Sciences*, 26(5), 1389–1406.
- Jain, S. K., Mani, P., Jain, S. K., Prakash, P., Singh, V. P., Tullos, D., Kumar, S., Agarwal, S. P., & Dimri, A. P. (2018). A brief review of flood forecasting techniques and their applications. *International Journal of River Basin Management*, 16(3), 329–344.
- Jakeman, A., Croke, B., & Fu, B. (2019). Uncertainty in environmental water quality modelling: Where do we stand? *New Trends in Urban Drainage Modelling*, 557–565. https://doi.org/10.1007/978-3-319-99867-1_96
- Jane, S. F., Hansen, G. J. A., Kraemer, B. M., Leavitt, P. R., Mincer, J. L., North, R. L., Pilla, R. M., Stetler, J. T., Williamson, C. E., Woolway, R. I., Arvola, L., Chandra, S., DeGasperi, C. L., Diemer, L., Dunalska, J., Erina, O., Flaim, G., Grossart, H.-P., Hambright, K. D., ... Rose, K. C. (2021). Widespread deoxygenation of temperate lakes. *Nature*, 594(7861), 66–70.

- Jennings, E., de Eyto, E., Laas, A., Pierson, D., Mircheva, G., Naumoski, A., Clarke, A., Healy, M., Šumberová, K., & Langenhaun, D. (2017). The NETLAKE metadatabase: A tool to support automatic monitoring on lakes in Europe and beyond. *Limnology and Oceanography Bulletin*, 26(4), 95–100. <https://doi.org/10.1002/lob.10210>
- Jin, T., Cai, S., Jiang, D., & Liu, J. (2019). A data-driven model for real-time water quality prediction and early warning by an integration method. *Environmental Science and Pollution Research International*, 26(29), 30374–30385.
- Jolliffe, I. T., & Stephenson, D. B. (2012). *Forecast verification: A Practitioner's guide in atmospheric science*. John Wiley & Sons.
- Kelley, J. G. W. (2022). *Upgrade of NOS Lake Superior operational forecast system to FVCOM: Model development and hindcast skill assessment*. Office of Coast Survey. Coast Survey Development Laboratory (U.S.). <https://doi.org/10.25923/NBF7-R211>
- Khudhair, Z. S., Zubaidi, S. L., Ortega-Martorell, S., Al-Ansari, N., Ethaib, S., & Hashim, K. (2022). A review of hybrid soft computing and data pre-processing techniques to forecast freshwater quality's parameters: Current trends and future directions. *Environments*, 9(7), 85.
- Kikon, A., & Deka, P. C. (2022). Artificial intelligence application in drought assessment, monitoring and forecasting: A review. *Stochastic Environmental Research and Risk Assessment: Research Journal*, 36(5), 1197–1214.
- Lahoz, W. A., & Schneider, P. (2014). Data assimilation: Making sense of earth observation. *Frontiers of Environmental Science & Engineering in China*, 2. <https://doi.org/10.3389/fenvs.2014.00016>
- Lewandoski, S. A., & Brenden, T. O. (2022). Forecasting suppression of invasive sea lamprey in Lake Superior. *Journal of Applied Ecology*, 59(8), 2023–2035.
- Lewis, A. S. L., Woelmer, W. M., Wander, H. L., Howard, D. W., Smith, J. W., McClure, R. P., Lofton, M. E., Hammond, N. W., Corrigan, R. S., Thomas, R. Q., & Carey, C. C. (2022). Increased adoption of best practices in ecological forecasting enables comparisons of forecastability. *Ecological Applications*, 32(2), e2500. <https://doi.org/10.1002/eap.2500>
- Liu, Q., Rowe, M. D., Anderson, E. J., Stow, C. A., Stumpf, R. P., & Johengen, T. H. (2020). Probabilistic forecast of microcystin toxin using satellite remote sensing, in situ observations and numerical modelling. *Environmental Modelling & Software*, 128, 104705.
- Lofton, M. E., Brentrup, J. A., Beck, W. S., Zwart, J. A., Bhattacharya, R., Brighenti, L. S., Burnet, S. H., McCullough, I. M., Steele, B. G., Carey, C. C., Cottingham, K. L., Dietze, M. C., Ewing, H. A., Weathers, K. C., & LaDeau, S. L. (2022). Using near-term forecasts and uncertainty partitioning to inform prediction of oligotrophic lake cyanobacterial density. *Ecological Applications*, 32(5), e2590. <https://doi.org/10.1002/eap.2590>
- Lofton, M. E., Howard, D. W., Thomas, R. Q., & Carey, C. C. (2022a). *Code repository: Progress and opportunities in advancing near-term forecasting of freshwater quality (v1.2)*. Zenodo. <https://doi.org/10.5281/zenodo.7508042>
- Lofton, M. E., Howard, D. W., Thomas, R. Q., & Carey, C. C. (2022b). State-of-the-art review of near-term freshwater forecasting literature published between 2017 and 2022 ver 1 [data set]. *Environmental Data Initiative*. <https://doi.org/10.6073/pasta/949164a64de132f3bbb7b92d2e1c729>
- Maasri, A., Jähnig, S. C., Adamescu, M. C., Adrian, R., Baigun, C., Baird, D. J., Batista-Morales, A., Bonada, N., Brown, L. E., Cai, Q., Campos-Silva, J. V., Clausnitzer, V., Contreras-MacBeath, T., Cooke, S. J., Datry, T., Delacámara, G., De Meester, L., Dijkstra, K.-D. B., Do, V. T., et al. (2022). A global agenda for advancing freshwater biodiversity research. *Ecology Letters*, 25(2), 255–263.
- Marcé, R., George, G., Buscarinu, P., Deidda, M., Dunalska, J., de Eyto, E., Flaim, G., Grossart, H.-P., Istvanovics, V., Lenhardt, M., Moreno-Ostos, E., Obrador, B., Ostrovsky, I., Pierson, D. C., Potužák, J., Poikane, S., Rinke, K., Rodríguez-Mozaz, S., Staehr, P. A., ... Jennings, E. (2016). Automatic high frequency monitoring for improved lake and reservoir management. *Environmental Science & Technology*, 50(20), 10780–10794.
- McClure, R. P., Thomas, R. Q., Lofton, M. E., Woelmer, W. M., & Carey, C. C. (2021). Iterative forecasting improves near-term predictions of methane ebullition rates. *Frontiers of Environmental Science & Engineering*, 9. <https://doi.org/10.3389/fenvs.2021.756603>
- Mercado-Bettin, D., Clayer, F., Shikhani, M., Moore, T. N., Frías, M. D., Jackson-Blake, L., Sample, J., Iturbide, M., Herrera, S., French, A. S., Norling, M. D., Rinke, K., & Marcé, R. (2021). Forecasting water temperature in lakes and reservoirs using seasonal climate prediction. *Water Research*, 201, 117286.
- Messenger, M. L., & Olden, J. D. (2018). Individual-based models forecast the spread and inform the management of an emerging riverine invader. *Diversity & Distributions*, 24(12), 1816–1829.
- Millar, C. I., & Woolfenden, W. B. (1999). The role of climate change in interpreting historical variability. *Ecological Applications*, 9(4), 1207–1216.
- Moore, T. N., Mesman, J. P., Ladwig, R., Feldbauer, J., Olsson, F., Pilla, R. M., Shatwell, T., Venkiteswaran, J. J., Delany, A. D., Dugan, H., Rose, K. C., & Read, J. S. (2021). LakeEnsemblR: An R package that facilitates ensemble modelling of lakes. *Environmental Modelling & Software*, 143, 105101.
- Moore, T. N., Thomas, R. Q., Woelmer, W. M., & Carey, C. C. (2022). Integrating ecological forecasting into undergraduate ecology curricula with an R shiny application-based teaching module. *Forecast*, 4(3), 604–633.
- Moorhouse, T. P., & Macdonald, D. W. (2015). Are invasives worse in freshwater than terrestrial ecosystems? *WIREs Water*, 2(1), 1–8.
- Mosavi, A., Ozturk, P., & Chau, K.-W. (2018). Flood prediction using machine learning models: Literature review. *Water*, 10(11), 1536.
- Mu, M., Li, Y., Bi, S., Lyu, H., Xu, J., Lei, S., Miao, S., Zeng, S., Zheng, Z., & Du, C. (2021). Prediction of algal bloom occurrence based on the naive Bayesian model considering satellite image pixel differences. *Ecological Indicators*, 124, 107416.
- Nicolle, P., Besson, F., Delaigue, O., Etchevers, P., François, D., Le Lay, M., Perrin, C., Rousset, F., Thiéry, D., Tilmant, F., & Magand, C. (2020). PREMHYCE: An operational tool for low-flow forecasting. *Proceedings of the IAHS*, 383, 381–389. <https://doi.org/10.5194/piahs-383-381-2020>
- NRC. (2010). *National Research Council, division on engineering and physical sciences, & committee on forecasting future disruptive technologies. Persistent forecasting of disruptive technologies*. National Academies Press.
- Nusrat, F., Haque, M., Rollend, D., Christie, G., & Akanda, A. S. (2022). A high-resolution earth observations and machine learning-based approach to forecast waterborne disease risk in post-disaster settings. *Climate*, 10(4), 48.
- Ouellet-Proulx, S., Chimi Chiadjeu, O., Boucher, M.-A., & St-Hilaire, A. (2017). Assimilation of water temperature and discharge data for ensemble water temperature forecasting. *Journal of Hydrology*, 554, 342–359.
- Ouellet-Proulx, S., St-Hilaire, A., & Boucher, M.-A. (2017). Water temperature ensemble forecasts: Implementation using the CEQUEAU model on two contrasted river systems. *Water*, 9(7), 457.
- Page, T., Smith, P. J., Beven, K. J., Jones, I. D., Elliott, J. A., Maberly, S. C., Mackay, E. B., De Ville, M., & Feuchtmayr, H. (2018). Adaptive forecasting of phytoplankton communities. *Water Research*, 134, 74–85.
- Pappenberger, F., Ramos, M. H., Cloke, H. L., Wetterhall, F., Alfieri, L., Bogner, K., Mueller, A., & Salamon, P. (2015). How do I know if my forecasts are better? Using benchmarks in hydrological ensemble prediction. *Journal of Hydrology*, 522, 697–713.
- Peng, Z., Hu, Y., Liu, G., Hu, W., Zhang, H., & Gao, R. (2020). Calibration and quantifying uncertainty of daily water quality forecasts for large lakes with a Bayesian joint probability modelling approach. *Water Research*, 185, 116162.

- Pennekamp, F., Iles, A. C., Garland, J., Brennan, G., Brose, U., Gaedke, U., Jacob, U., Kratina, P., Matthews, B., Munch, S., Novak, M., Palamara, G. M., Rall, B. C., Rosenbaum, B., Tabi, A., Ward, C., Williams, R., Ye, H., & Petchey, O. L. (2019). The intrinsic predictability of ecological time series and its potential to guide forecasting. *Ecological Monographs*, 89(2), e01359.
- Perretti, C. T., Munch, S. B., & Sugihara, G. (2013). Model-free forecasting outperforms the correct mechanistic model for simulated and experimental data. *Proceedings of the National Academy of Sciences of the United States of America*, 110(13), 5253–5257.
- Petchey, O. L., Pontarp, M., Massie, T. M., Kéfi, S., Ozgul, A., Weilenmann, M., Palamara, G. M., Altermatt, F., Matthews, B., Levine, J. M., Childs, D. Z., McGill, B. J., Schaepman, M. E., Schmid, B., Spaak, P., Beckerman, A. P., Pennekamp, F., & Pearse, I. S. (2015). The ecological forecast horizon, and examples of its uses and determinants. *Ecology Letters*, 18(7), 597–611.
- Petrea, S. M., Zamfir, C., Simionov, I. A., Mogodan, A., Nuță, F. M., Rahoveanu, A. T., Nancu, D., Cristea, D. S., & Buhociu, F. M. (2021). A forecasting and prediction methodology for improving the blue economy resilience to climate change in the Romanian lower Danube Euroregion. *Sustainability: Science Practice and Policy*, 13(21), 11563.
- Pielke, R. A. (1999). Who decides? Forecasts and responsibilities in the 1997 Red River flood. *Applied Behavioral Science Review*, 7(2), 83–101.
- Poh Wai, K., Yan Chia, M., Hoon Koo, C., Feng Huang, Y., & Chan Chong, W. (2022). Applications of deep learning in water quality management: A state-of-the-art review. *Journal of Hydrology*, 128332.
- Quinn, N. W. T., Jacobs, K., Chen, C. W., & Stringfellow, W. T. (2005). Elements of a decision support system for real-time management of dissolved oxygen in the San Joaquin River deep water Ship Channel. *Environmental Modelling & Software*, 20(12), 1495–1504.
- Rayner, S., Lach, D., & Ingram, H. (2005). Weather forecasts are for wimps: Why water resource managers Do not use climate forecasts. *Climatic Change*, 69, 197–227.
- Read, J. S., Jia, X., Willard, J., Appling, A. P., Zwart, J. A., Oliver, S. K., Karpatne, A., Hansen, G. J. A., Hanson, P. C., Watkins, W., Steinbach, M., & Kumar, V. (2019). Process-guided deep learning predictions of lake water temperature. *Water Resources Research*, 55(11), 9173–9190.
- Record, N. R., & Pershing, A. J. (2021). Facing the forecaster's dilemma: Reflexivity in ocean system forecasting. *Journal of Geophysical Research, C: Oceans*, 2(4), 738–751.
- Reggiani, P., Talbi, A., & Todini, E. (2022). Towards informed water resources planning and management. *Hydrology*, 9(8), 136.
- Reich, N. G., Cornell, M., Ray, E. L., House, K., & Le, K. (2021). The Zoltar forecast archive, a tool to standardize and store interdisciplinary prediction research. *Scientific Data*, 8(1), 59. <https://doi.org/10.1038/s41597-021-00839-5>
- Rosenberg, J. M., Kubsch, M., Wagenmakers, E.-J., & Dogucu, M. (2022). Making sense of uncertainty in the science classroom. *Science & Education*, 31, 1239–1262. <https://doi.org/10.1007/s11191-022-00341-3>
- Roulston, M. S., & Smith, L. A. (2002). Evaluating probabilistic forecasts using information theory. *Monthly Weather Review*, 130(6), 1653–1660.
- Rouso, B. Z., Bertone, E., Stewart, R., & Hamilton, D. P. (2020). A systematic literature review of forecasting and predictive models for cyanobacteria blooms in freshwater lakes. *Water Research*, 182, 115959.
- Sadler, J. M., Appling, A. P., Read, J. S., Oliver, S. K., Jia, X., Zwart, J. A., & Kumar, V. (2022). Multi-task deep learning of daily streamflow and water temperature. *Water Resources Research*, 58(4). <https://doi.org/10.1029/2021wr030138>
- Schaake, J. C., Hamill, T. M., Buizza, R., & Clark, M. (2007). HEPEX: The hydrological ensemble prediction experiment. *Bulletin of the American Meteorological Society*, 88(10), 1541–1548.
- Singh, M., & Ahmed, S. (2021). IoT based smart water management systems: A systematic review. *Materials Today: Proceedings*, 46, 5211–5218.
- Smith, L. A., Suckling, E. B., Thompson, E. L., Maynard, T., & Du, H. (2015). Towards improving the framework for probabilistic forecast evaluation. *Climatic Change*, 132(1), 31–45.
- Stumpf, R. P., Johnson, L. T., Wynne, T. T., & Baker, D. B. (2016). Forecasting annual cyanobacterial bloom biomass to inform management decisions in Lake Erie. *Journal of Great Lakes Research*, 42(6), 1174–1183.
- Sunyaev, A. (2020). Cloud computing. In A. Sunyaev (Ed.), *Internet computing: Principles of distributed systems and emerging internet-based technologies* (pp. 195–236). Springer International Publishing.
- Tetlock, P. E., & Gardner, D. (2016). *Superforecasting: The art and science of prediction*. Random House Books.
- Theocharis, Z., Smith, L. A., & Harvey, N. (2019). The influence of graphical format on judgmental forecasting accuracy: Lines versus points. *Futures & Foresight Science*, 1(1), e7.
- Thomas, R. Q., Boettiger, C., Carey, C. C., Dietze, M. C., Johnson, L. R., Kenney, M. A., McLachlan, J. S., Peters, J. A., Sokol, E. R., Weltzin, J. F., Willson, A., Woelmer, W. M., & Challenge Contributors. (2022). The NEON ecological forecasting challenge. ESS Open Archive. <https://doi.org/10.22541/essoar.167079499.99891914/v1>
- Thomas, R. Q., Figueiredo, R. J., Daneshmand, V., Bookout, B. J., Puckett, L. K., & Carey, C. C. (2020). A near-term iterative forecasting system successfully predicts reservoir hydrodynamics and partitions uncertainty in real time. *Water Resources Research*, 56, e2019WR026138.
- Thomas, R. Q., McClure, R., Moore, T., Woelmer, W., Boettiger, C., Figueiredo, R., Hensley, R., & Carey, C. (2022). Near-term forecasts of NEON lakes reveal gradients of environmental predictability across the U.S. *Frontiers in Ecology and the Environment*. <https://doi.org/10.1002/essoar.10510642.1>
- Thompson, E. L., & Smith, L. A. (2019). Escape from model-land. *Economics*, 13. <https://doi.org/10.5018/economics-ejournal.ja.2019-40>
- Troin, M., Arsenault, R., Wood, A. W., Brissette, F., & Martel, J.-L. (2021). Generating ensemble streamflow forecasts: A review of methods and approaches over the past 40 years. *Water Resources Research*, 57(7), e2020WR028392.
- Turner, S. W. D., Bennett, J. C., Robertson, D. E., & Galelli, S. (2017). Complex relationship between seasonal streamflow forecast skill and value in reservoir operations. *Hydrology and Earth System Sciences*, 21(9), 4841–4859.
- Turner, S. W. D., Xu, W., & Voisin, N. (2020). Inferred inflow forecast horizons guiding reservoir release decisions across the United States. *Hydrology and Earth System Sciences*, 24(3), 1275–1291.
- U.S. EPA. (2016). *Six key steps for developing and using predictive tools at your beach* (No. 820-R-16-001). U.S. Environmental Protection Agency Office of Water. <https://www.epa.gov/sites/default/files/2016-03/documents/six-key-steps-guidance-report.pdf>
- U.S. NOAA. (2014). A strategic vision for NOAA's ecological forecasting roadmap 2015–2019. <https://aambpublicoceanservice.blob.core.windows.net/oceanserviceprod/ecoforecasting/noaa-ecoforecasting-roadmap.pdf>
- U.S. NOAA, Center for Operational Oceanographic Products and Services. (2018). *Forecast products and associated satellite imagery from Lake Erie created by the NOAA harmful algal bloom operational forecast system (HAB-OFS) from 2017-06-25 to 2020-10-20 [data set]*. National Centers for Environmental Information. <https://www.ncei.noaa.gov/archive/accession/NOS-HABOFS-LakeErie>
- Vaillancourt, P., Wineholt, B., Barker, B., Deliyannis, P., Zheng, J., Suresh, A., Brazier, A., Knepper, R., & Wolski, R. (2020). Reproducible and portable workflows for scientific computing and HPC in the cloud. *Practice and Experience in Advanced Research Computing*, 311–318. <https://doi.org/10.1145/3311790.3396659>

- Varadharajan, C., Appling, A. P., Arora, B., Christianson, D. S., Hendrix, V. C., Kumar, V., Lima, A. R., Müller, J., Oliver, S., Ombadi, M., Perciano, T., Sadler, J. M., Weierbach, H., Willard, J. D., Xu, Z., & Zwart, J. (2022). Can machine learning accelerate process understanding and decision-relevant predictions of river water quality? *Hydrological Processes*, 36(4). <https://doi.org/10.1002/hyp.14565>
- Walsh, J. R., Carpenter, S. R., & Vander Zanden, M. J. (2016). Invasive species triggers a massive loss of ecosystem services through a trophic cascade. *Proceedings of the National Academy of Sciences of the United States of America*, 113(15), 4081–4085.
- Ward, E. J., Holmes, E. E., Thorson, J. T., & Collen, B. (2014). Complexity is costly: A meta-analysis of parametric and non-parametric methods for short-term population forecasting. *Oikos*, 123(6), 652–661.
- Weathers, K., Hanson, P. C., Arzberger, P., & Brenttrup, J. (2013). The global Lake ecological observatory network (GLEON): The evolution of grassroots network science. *Limnology and Oceanography Bulletin*, 22(3), 71–73. <https://doi.org/10.1002/lob.201322371>
- White, E. P., Yenni, G. M., Taylor, S. D., Christensen, E. M., Bledsoe, E. K., Simonis, J. L., & Ernest, S. K. M. (2019). Developing an automated iterative near-term forecasting system for an ecological study. *Methods in Ecology and Evolution*, 10(3), 332–344.
- Willson, A. (2022). Open-access, online resources for ecological forecasting [data set]. Figshare repository. <https://doi.org/10.6084/m9.figshare.19765834.v1>
- Woelmer, W. M., Bradley, L. M., Haber, L. T., Klings, D. H., Lewis, A. S. L., Mohr, E. J., Torrens, C. L., Wheeler, K. I., & Willson, A. M. (2021). Ten simple rules for training yourself in an emerging field. *PLoS Computational Biology*, 17(10), e1009440.
- Woelmer, W. M., Thomas, R. Q., Lofton, M. E., McClure, R. P., Wander, H. L., & Carey, C. C. (2022). Near-term phytoplankton forecasts reveal the effects of model time step and forecast horizon on predictability. *Ecological Applications*, 32, e2642. <https://doi.org/10.1002/eap.2642>
- Yip, S., Ferro, C. A. T., Stephenson, D. B., & Hawkins, E. (2011). A simple, coherent framework for partitioning uncertainty in climate predictions. *Journal of Climate*, 24(17), 4634–4643.
- Zabini, F. (2016). Mobile weather apps or the illusion of certainty. *Meteorological Applications*, 23(4), 663–670.
- Zhu, S., & Piotrowski, A. P. (2020). River/stream water temperature forecasting using artificial intelligence models: A systematic review. *Acta Geophysica*, 68(5), 1433–1442.
- Zwart, J. A., Hararuk, O., Prairie, Y. T., Jones, S. E., & Solomon, C. T. (2019). Improving estimates and forecasts of lake carbon dynamics using data assimilation. *Limnology and Oceanography: Methods*, 17(2), 97–111.

SUPPORTING INFORMATION

Additional supporting information can be found online in the Supporting Information section at the end of this article.

How to cite this article: Lofton, M. E., Howard, D. W., Thomas, R. Q., & Carey, C. C. (2023). Progress and opportunities in advancing near-term forecasting of freshwater quality. *Global Change Biology*, 29, 1691–1714. <https://doi.org/10.1111/gcb.16590>